



Education Sector

Contents

- 1 About Us
- 2 Colours
- 3 Exterior
- 5 Washrooms
- 9 Doors
- 11 Furniture
- 12 Communication Surfaces
- 13 Case Study - Bournemouth University Fusion
- 15 Younique® in Education



Education sector

A British study conducted in 2017 shows that poor design is attributed to a £150m* a year unnecessary annual spend on school maintenance.

Better design choices could help to save maintenance costs, keep the building looking better for longer and provide a fun and healthy environment for education.

In this brochure you will see a range of aesthetically beautiful and durable products for a range of applications for the inside and outside of a school building.

*Research conducted by Royal Institute of British Architects - architecture.com/TopMarkSchools

Who are we?

Formica Group is the original laminate manufacture of High Pressure Laminates (HPL), with over 100 years of design, product innovation and manufacturing experience. The heritage and brand reputation of Formica Group has been founded on quality, service and unrivalled expertise that ensures products meet the needs of their applications.

In May 2007, Formica Group was acquired by Fletcher Building, one of Australia and New Zealand's largest building companies. The acquisition resulted in the creation of the world's largest manufacturer of decorative surfaces and high pressure laminate.

What we do

Formica Group leads the industry in the design, manufacture and distribution of innovative surfacing products for commercial and residential applications. We specialise in manufacturing HPL which is robust, hygienic and offers countless design and application opportunities, making it an extremely popular surface for the education sector. We have a competitive range of decorative surfaces including over 150 plain colours in addition to on-trend patterns and timeless woodgrains.

In response to customer demands and future design trends, we are leading the way with innovative designs, textures and materials.

Our latest innovation, Formica Infiniti™ adds anti-fingerprint and anti-marking technology to a superior matt finish, which was a Red Dot winner in 2017.

Previous enhancements and technology innovations to the range includes ColorCore® - a solid through colour laminate, DecoMetal® - incorporating real metal foils, and Younique® - a bespoke digital and screen print service.

Formica® Compact is a structural, two sided laminate that provides the perfect solution for washrooms, lockers, fixtures and furniture in Nurseries, Schools, Colleges and Universities. Formica Compact is available in 12mm thickness as standard, but can be manufactured in thicknesses from 3 - 20mm depending on your requirements. This versatile solution is ideally suited to particularly demanding environments subject to high levels of humidity, impact and wear and tear – perfect for schools. Formica Compact is CE certified to meet or exceed conformity with European consumer safety, health and environmental requirements.





Eva Höernisch

Design Manager

Pupils, teachers and staff spend a third of their time in School. With the funding available, it's a great opportunity to ensure these environments become an enjoyable place to be. Furthermore, with the social aspect and feel-good factors influencing decisions for schools, colleges and universities, it's important that the appearance of a School represents the high levels of academic excellence.

“A bright, cheerful palette of 10 saturated colours showcases the core range” Eva suggests. “It’s a modern selection, an enhancement from the typical red, yellow, blue of the past. There’s a powerful and energetic red, a glorious orange, a citric chrome yellow, the juicy lemon, vibrant green, a fun and tropical blue, a fashionable purple and the energetic juicy pink.”

"The range of darker accents are to be used in smaller portions than fully saturated or pastel ranges as they can become quite heavy when applied extensively in large areas. The pastel tones make for a beautiful palette of their own or great layering effects with the more saturated colours from the core selection."

Feeling inspired? Why not visit formica.com and order your own HPL samples to create lively, colourful ranges for your education projects.

The diagram illustrates a color palette organized into three columns: Dark Accents, Core, and Pastels. The colors are arranged in rows, with some rows featuring a white background for the Pastels column.

Dark Accents	Core	Pastels
Dark Purple	Hot Pink	Light Pink
	Muted Purple	
Dark Navy Blue	Dark Blue	Light Blue
	Medium Blue	
Teal	Light Teal	Light Teal
Dark Green	Dark Olive Green	Light Yellow-Green
	Light Yellow-Green	
Gold	Yellow	Light Yellow
	Orange	Light Orange
Dark Red	Red	

VIVIX® architectural panels by Formica Group

VIVIX® solid, lightweight, compact engineered exterior façade panels have a decorative surface on both sides. This rainscreen cladding solution combines excellent weather and UV resistance properties for enhanced durability and ease of maintenance.

With a choice of 68 colours, patterns and woodgrains, VIVIX architectural panels are a fantastic solution for schools and universities, when image and durability are equally important.



Performance features

- Acts as a secondary skin managing weather impact
- System utilises air circulation, working with nature to keep the building dry
- A well-insulated system can improve a buildings thermal efficiency
- Renovate older school buildings to extend their life and create a modern appearance
- Low maintenance, UV and weather resistant
- Euroclass Fire Retardant Certificate in accordance with European regulation EN 13501-1.





F7851 Spectrum Blue F7940 Spectrum Yellow

Restoring a nursery to its former glory

When Scott Wilkie Nursery, in the London Borough of Newham, required structural recladding on an allocated budget, Newham Council selected Formica Group's VIVIX® exterior façade panels to restore the nursery to make sure it was resistant to the elements and easy to maintain.

“Using timber as a material requires regular maintenance, and metal is an expensive format whereby the thin sheets are prone to dent, so I was looking for an acceptable alternative that was aesthetically pleasing. Working for the council it is essential budgets are met but without compromising on quality; we approach refurbishment with an eye on longevity.”



Be knowledgeable

Contact us a request a CPD (Continuous Product Development) seminar by Formica Group: Form and Function, Principles and Benefits of Rainscreen Cladding. Download our VIVIX BIM objects by visiting formica.com



Be demanding

VIVIX® panels, complying with EN438:2005, provide quality solutions for any architectural cladding need. When conditions are demanding, VIVIX responds with its 10-year guarantee.



Be Younique®

Create something unique – patterns, logos, photographs or signage. How about some inspiring images or a bright, colourful print to add individuality to your building? Younique® by Formica group brings you a one-of-a-kind surface offering you a bespoke print to our architectural panels.

Younique™

DESIGN A LAMINATE by FORMICA GROUP

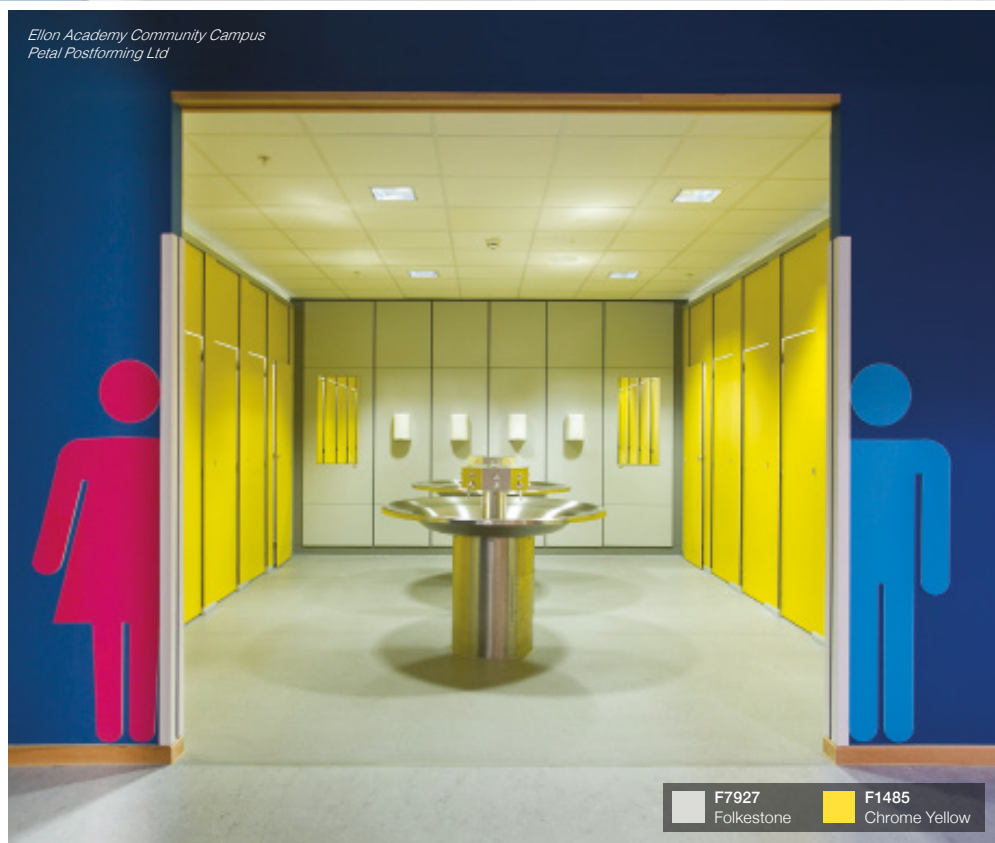
Hygienic, durable and on-trend washroom cubicles

The Formica® Washroom Collection is available in postforming grade laminate and compact grade laminate, providing you with a comprehensive choice of designs applied to a material most suited for your requirements. Available in four sheet sizes, our Washroom range enables fabricators and manufacturers to use our laminate with peace of mind that the project will be cost effective and efficient.



85% of teachers surveyed in a European poll said well-designed toilet facilities were an important factor when it came to improving pupil behaviour.

Research conducted by
Royal Institute of British Architects
architecture.com/TopMarkSchools





Washroom considerations

Important aspects for washroom design include compliance with the Disability Discrimination Act (DDA) and Anti-Bullying. Both of these have influenced and shaped the design of washroom cubicles in recent years, which are getting bigger, deeper and taller. The DDA regulations provide an opportunity to avoid children suffering indignities inside the washroom.

A lack of privacy and not enough room were two of the major concerns, with a 450mm maneuvering space required from the cubicle door and toilet pan. Furthermore, with the focus on privacy and anti-bullying, washroom cubicles are becoming lower to the ground and taller, discouraging anti-social behaviour.

Formica Group's range of HPL and Compact grade sheet sizes allows for the design of taller and deeper cubicles, whilst considering cost implications and design.

The Washroom collection offers sheet sizes from 1850mm high to 3705mm, ensuring specifiers, fabricators, local authorities and School Heads can select a design knowing there will be a sheet size to suit for maximum efficiency.



Performance features



Resistente a los agentes químicos



Cualquier orientación



Resistente al impacto



Resistente a la humedad



Higiénico



Grado autoportante CGS



Resistente a las manchas

Open up your imagination

The Formica® Door collection provides a wide choice of colours, patterns, wood grains and creative surfaces such as magnetic and Younique® by Formica Group. With 186 decors to choose from, in a combination of four surface finishes, there are no limitations to your design.

Whether you opt for a splash of colour, or prefer the natural beauty of wood, Formica High Pressure Laminate offers a practical solution for interior doors. Its inherent properties make it ideal for high-traffic environments and regular usage as expected in schools and universities.





F8851
Classic Wenge

Finish:
Linewood



408

Finishes

Puregrain: Timeless and Premium, Puregrain brings the natural feel of lightly brushed or oiled woodgrains to your projects when you're looking for a classic touch.

Linewood: Velvety and smooth to touch, Linewood reflects the beauty of wire brushed or sandblasted woods in a variety of woodgrains and selected colours.

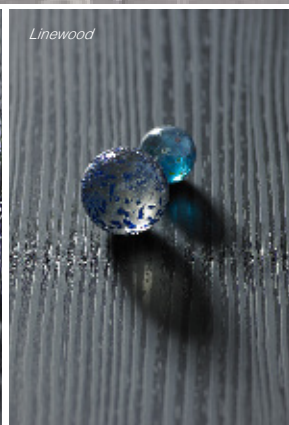
Naturelle: A natural woodgrain look with an elegant matt finish, this texture is available on selected woodgrains and adds a touch of class.

Matte 58: A clean, modern and contemporary look available on all colours, patterns and selected woodgrains.

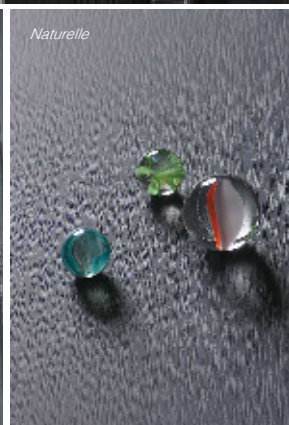
Mat: ...?



Puregrain



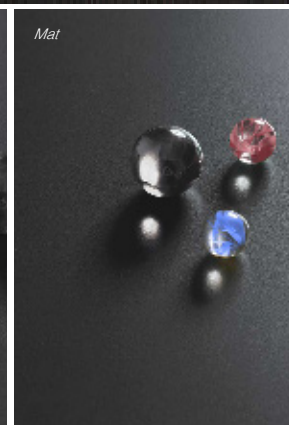
Linewood



Naturelle



Matte 58



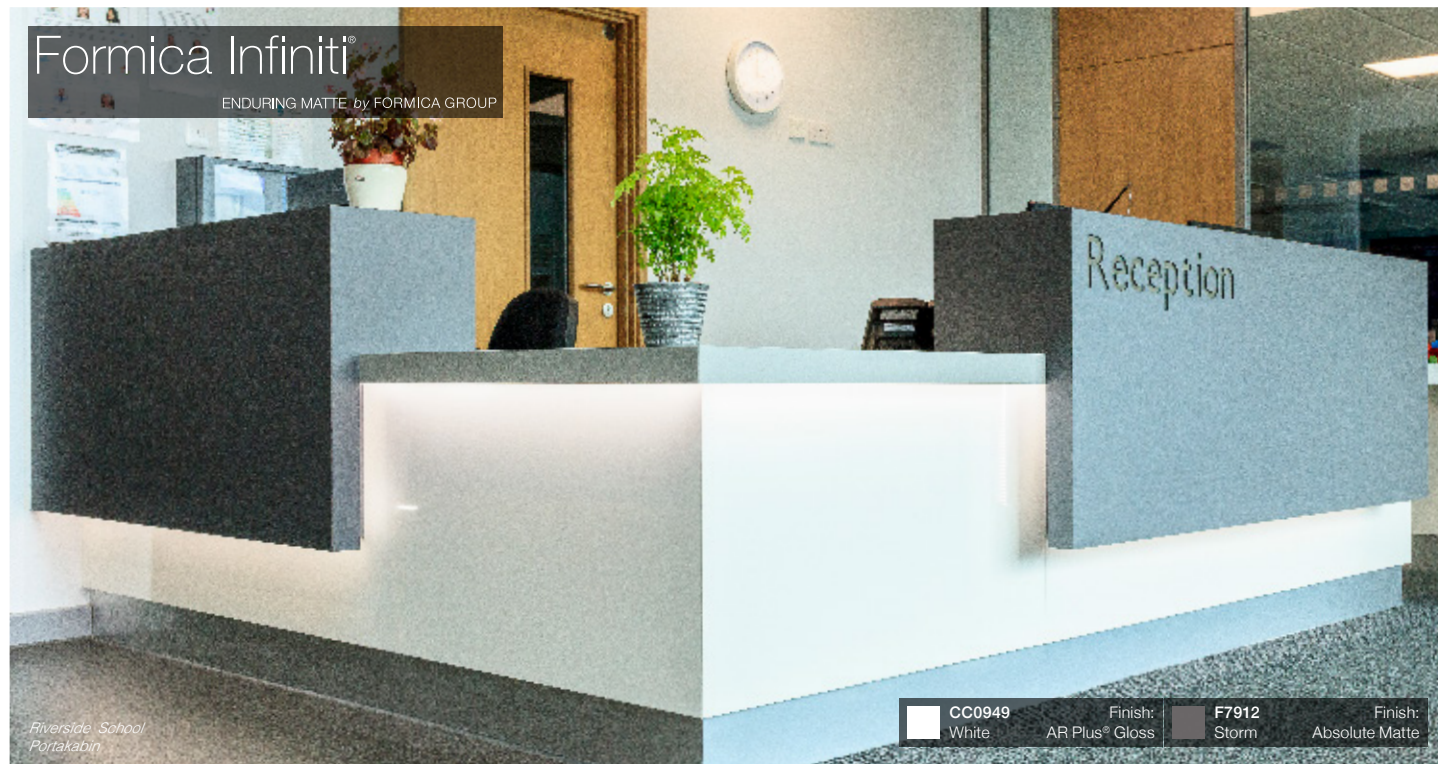
Mat

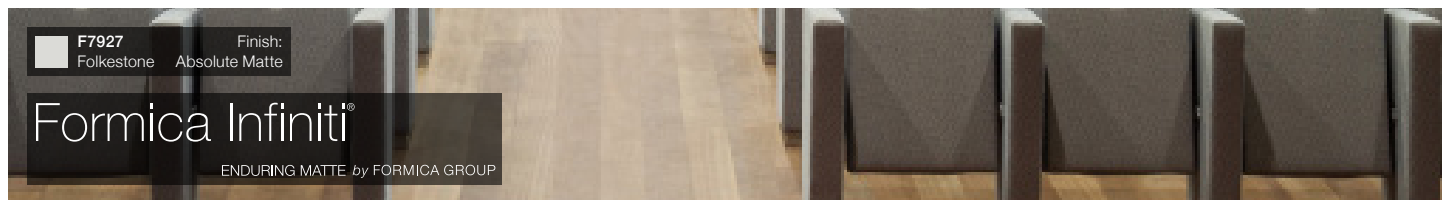
Versatile and communicative surfaces

Creating an exciting learning environment is just as important for teachers and pupils. In a European poll, 1 in 20 teachers have left a school because of the condition of the building.

Laminate is versatile and can be applied to most surfaces to create beautiful designs and inspirational environments.

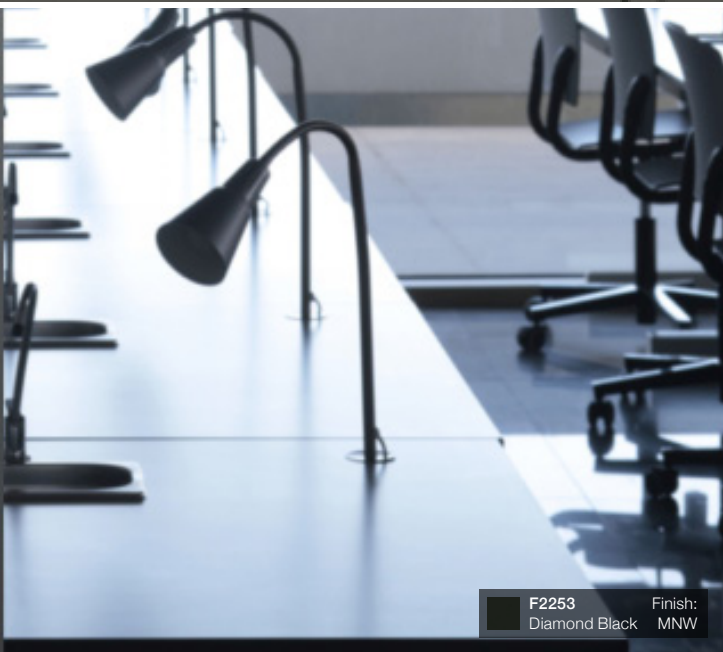
Update table tops, furniture and wall panelling to create bright spaces to inspire teachers and their pupils. Consider chalk board, white board and magnetic surfaces to encourage interaction and utilise space. With 93% of teachers agreeing that school design is imperative for effective learning and 69% suggesting spacious learning areas is the most important element to effective learning, schools must look at making the most of spaces they have when expansion is not a possibility.





Performance features

- Soft touch
- Anti-finger print
- Anti-marking
- Thermal healing of micro-scratches
- Anti-microbial
- Post forming

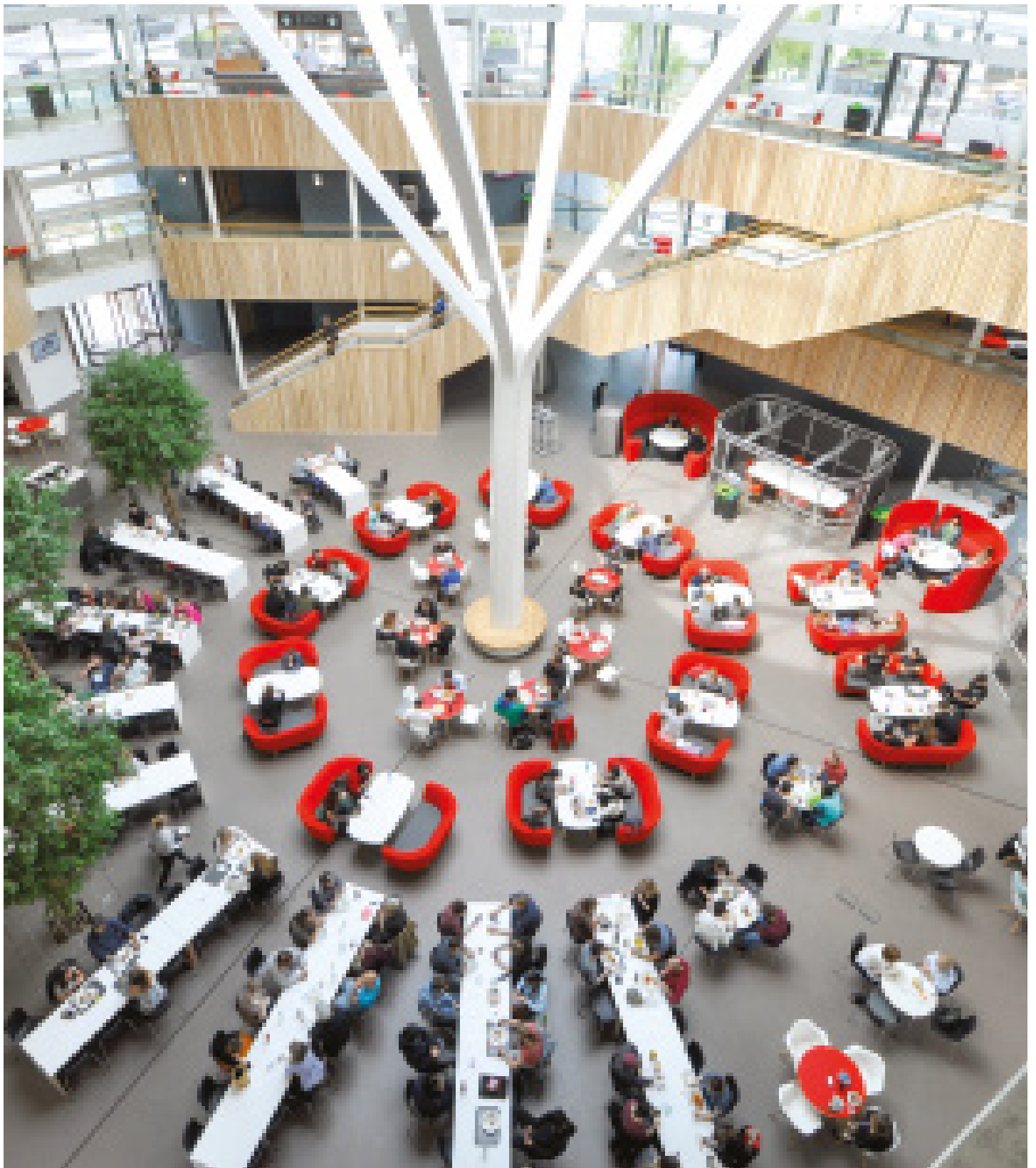


Bournemouth University Fusion James Burleigh furniture

James Burleigh is a prestigious London based furniture designer and manufacturer specialising in high quality tables and benches.

Since launching in 2002, James Burleigh has been creating products that are functional, aesthetically pleasing and sustainable, incorporating 3mm compact grade Formica® Laminate. They are popular pieces of furniture, which can be found in the University of Nottingham, Manchester University, Dagenham Park School and Hastings College. The latest project to use Formica® Laminate can be found at Bournemouth University within their new flagship academic building. Opened in September 2016, the Capital Projects team worked alongside BDP Architects and was beautifully carried out by the BOF team. James Burleigh Waldo/45, EB18 and Jura tables circled the structural centre piece, which incorporated F7949 Soft White, F1238 Carnaval and F2253 Diamond Black.





High quality, contemporary range of tables

From their design and manufacturing facility in north-west London James Burleigh produces a high quality contemporary range of tables, benches and stools. Their signature collection uses strong compact grade Formica laminate with a choice of solid wood edgings.

James Burleigh is a keen proponent of Formica® laminate because of its visual appeal, strength and durability. He says that in education settings in particular, furniture can be put through something of an endurance test and Formica laminate succeeds time and again. It is particularly suitable for today's informal learning zones enabling students to study and socialise in a stimulating engaging space.

His tables, benches and stools have been used in education projects for cafes, libraries and transition spaces where remote working or meet-ups are an integral part of campus life. James Burleigh tends towards the matt colours of the Formica® Collection and believes the choice of over 100 colours is an important element in creating and supporting the mood of a setting, be it uplifting, playful, calm or formal.

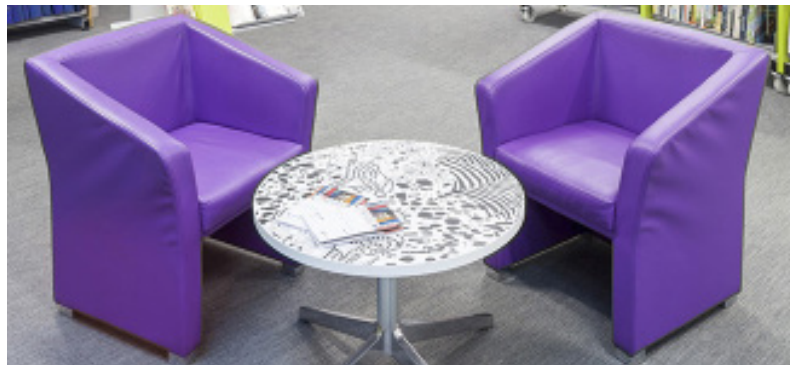
Design a laminate

Younique® by Formica Group is a High Pressure Laminate with a customised, printed image as its decorative face. The printed image is incorporated into the laminate structure for greater resistance to damage and ease of maintenance.

Younique® laminate can be single sided HPL or double-sided compact grade laminate. It's a perfect solution for school logos, photographs, creative designs and signage adding individuality to building exteriors, doors, washrooms and classrooms.

The Younique by Formica Group service offers both screen print and digital print solutions to ensure the optimum replication of any design.

*Athelstan Community Primary School
Aaztec Cubicles*





Spain and Portugal

Tel.: + 34 96 122 07 01
contact.es@formica.com
muestras@formica.com

France

Tel: +33 (0) 3 87 29 10 13
service.echantillons@formica.com

Italy

Tel: +39 068 7502115
italia@formica.com

Morocco

Tel: +212 (0) 522472047
administration.maroc@formica.com



formica.com