

ECCO

dECOLeather™

RECYCLED LEATHER VENEER *by* FORMICA GROUP



dECOLeather™

RECYCLED LEATHER VENEER *by* FORMICA GROUP

dECOLeather™, a recycled leather veneer redefined as a surface that beckons, offers a sense of luxury and draws the eye to spaces such as a trendy hotel reception desk, or a chic cocktail bar.

Richly grained, eco-friendly recycled leather veneer brings sustainable elegance to interiors and provides all the best of leather including the look, feel, and aroma, with increased durability.

dECOLeather™ is ideal for hotel, restaurants, stores, offices, or any setting that calls for tables, furniture, doors, cabinets and feature walls.



## GREEN | SUSTAINABLE | RENEWABLE

With sustainability in mind, this product is made from pulverized leather fibers extracted from car seats and leather tanneries that would otherwise be thrown away as trash.

By rethinking how we view trash, we can repurpose unexpected materials and turning them into new products.

## FEATURES & BENEFITS | dECOLeather™ Recycled Leather Veneer



### Sustainable & Green Product

70% recycled leather fibers, natural rubber



### Easier Fabrication

- Consistent sheet size and shape
- Consistent thickness across the sheet



### Durable & Resilient



### Easy to Clean and Maintain

- Multiple layers of water based protective coating
- Stain resistant



### Provides Same Luxurious Feel and Aesthetics



### Suited for Interior Light-duty Horizontal or Vertical Surfaces



### Green Environmental Guarantee

May contribute to LEED® in these categories:

- |           |             |   |
|-----------|-------------|---|
| MR        | - 4.1 / 4.2 | RECYCLED CONTENT (PRE-CONSUMER)         |
| IAC       | - 4.2 / 4.3 | LOW-EMISSION ADHESIVE AND PRODUCT       |
| RENEWABLE | - 6.0       | RAPIDLY RENEWABLE RESOURCE AND MATERIAL |



APPLICATION AREAS | Table Tops





APPLICATION AREAS | Bar Counters



APPLICATION AREAS | Retail Caseworks

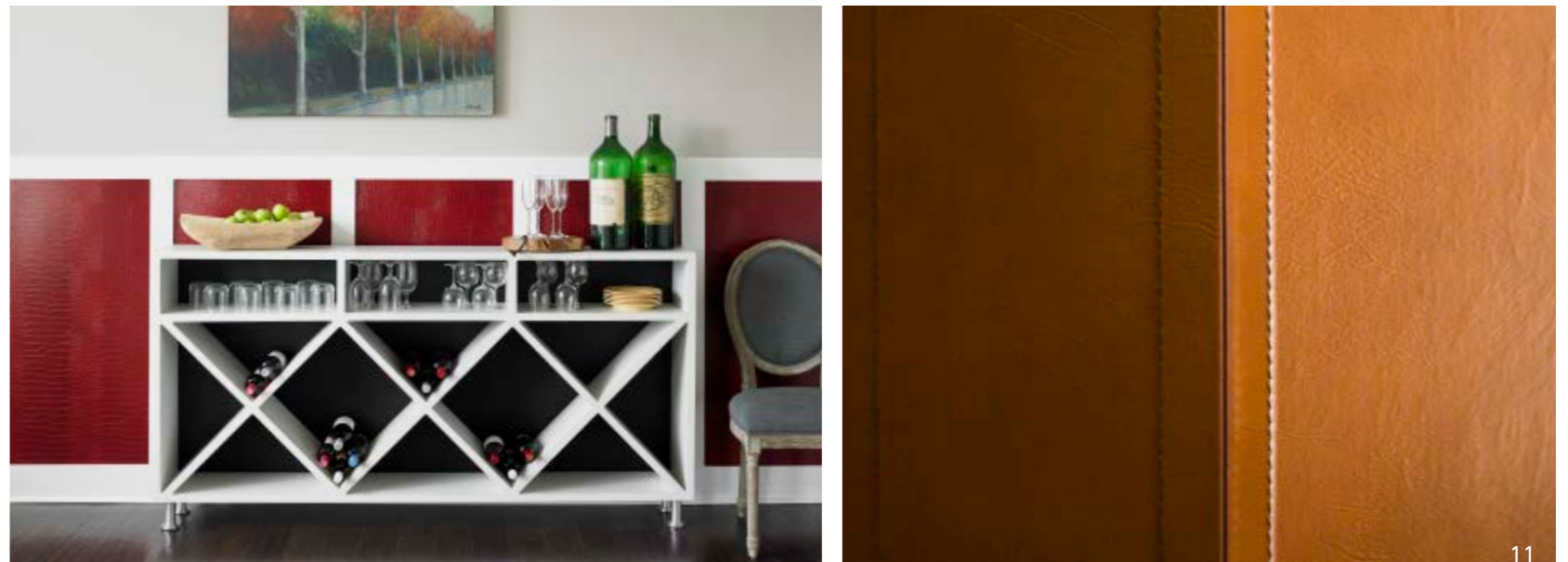


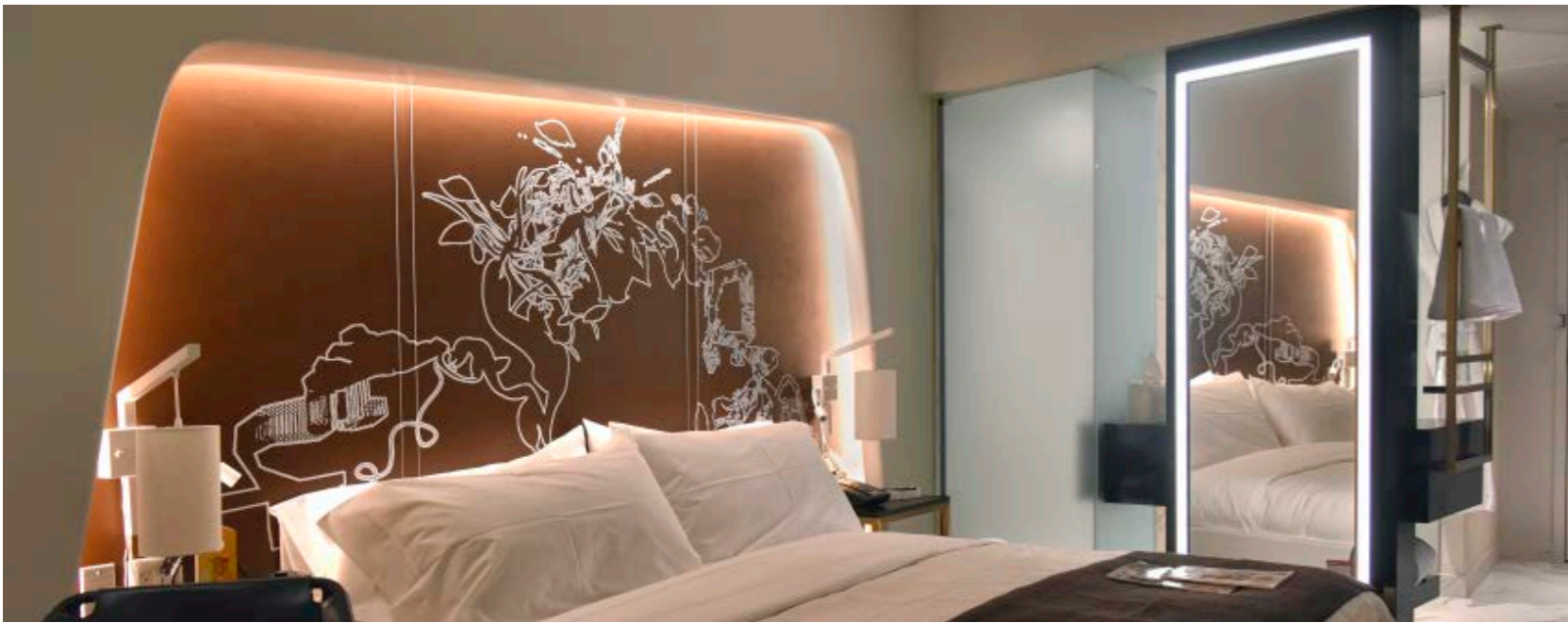


APPLICATION AREAS | Cabinet Inlays



APPLICATION AREAS | Accent Walls





APPLICATION AREAS | Bed Headboards

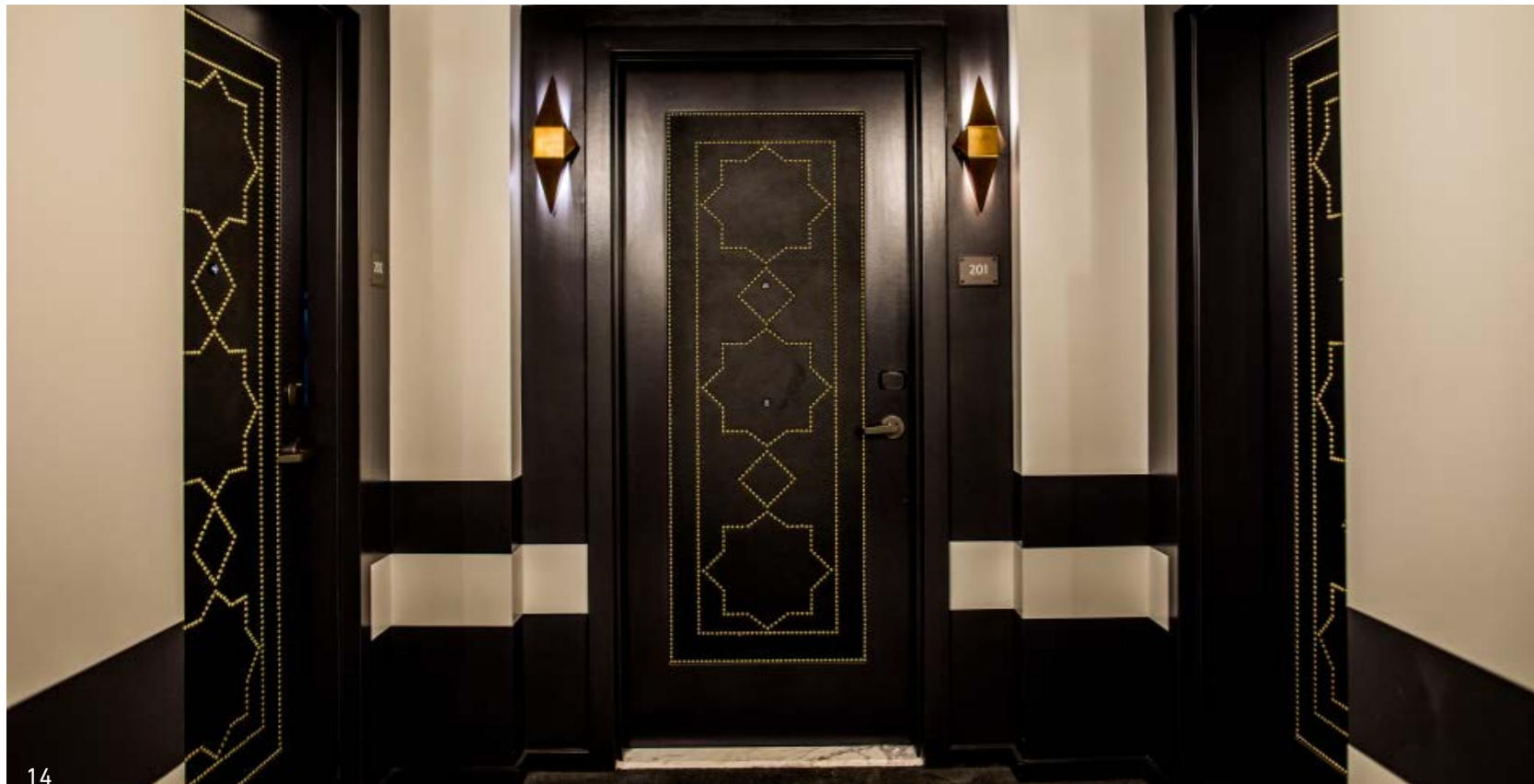
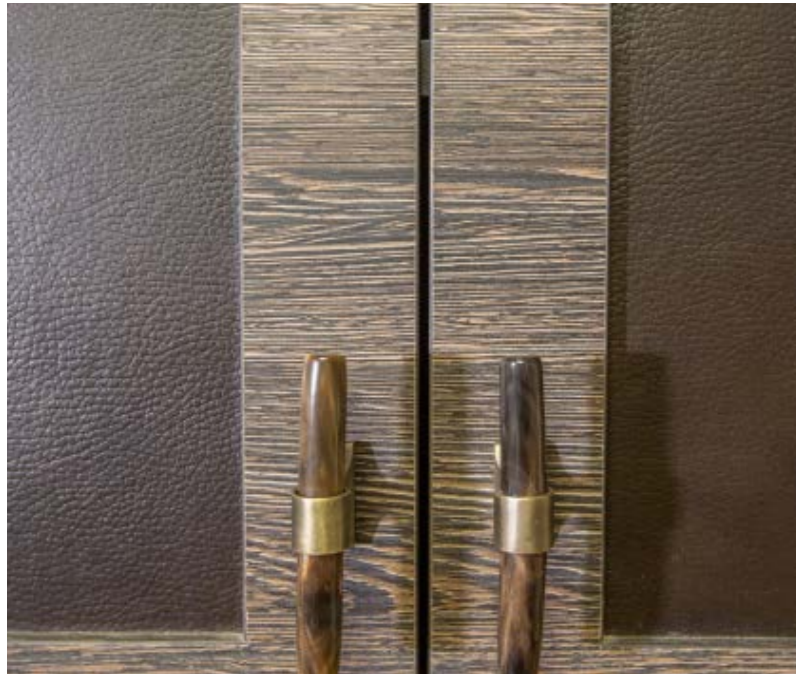


APPLICATION AREAS | Columns



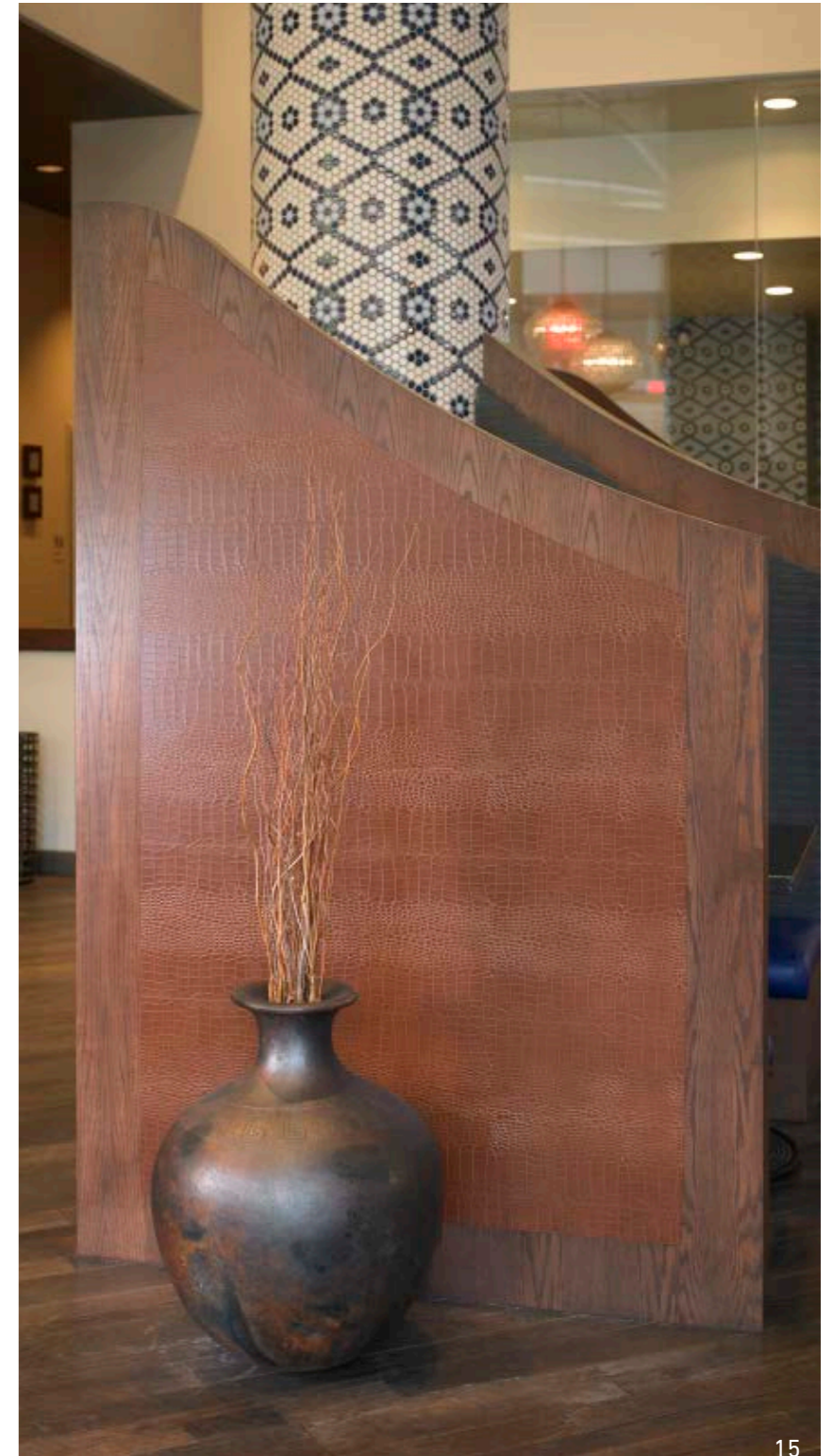
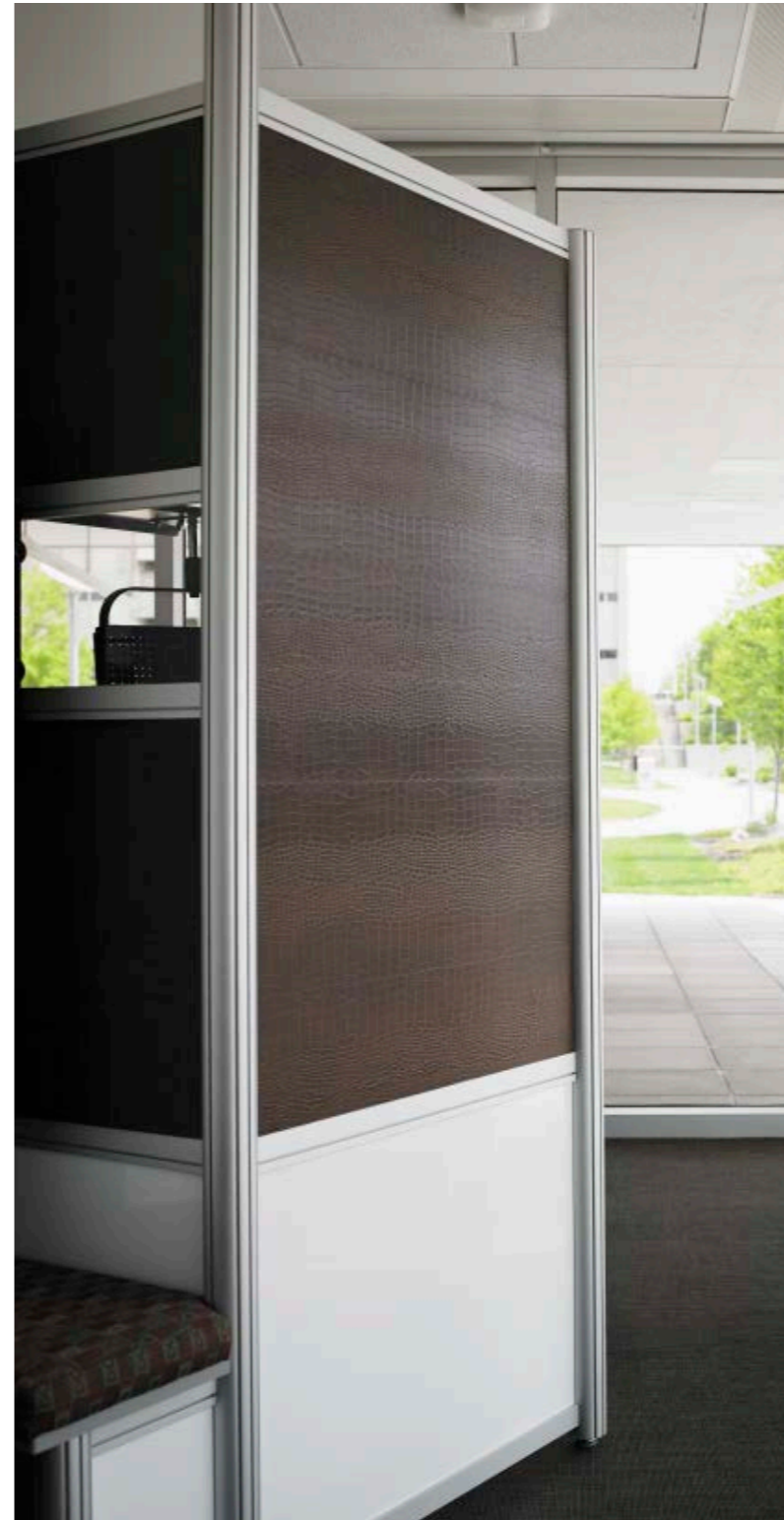
APPLICATION AREAS |

Doors / Signages



APPLICATION AREAS |

Partitions







**PRODUCT**  
 PRODUCT SPECIFICATIONS  
 TECHNICAL DATA  
 TEXTURES  
 FABRICATION GUIDE

## PRODUCT SPECIFICATIONS | dEcoLeather™ Recycled Leather Veneer

- Nominal Thickness : 0.31" (0.8mm)
- Nominal Size : Approximately 4' x 8' (1220 x 2440mm)
- Finish Availability : Buffalo (BF)  
Crocodile (CD)  
Shagreen (SG)  
Walrus (WR)



## TECHNICAL DATA | dEcoLeather™ Recycled Leather Veneer

PROPERTY	TEST METHOD	FORMICA TYPICAL VALUE
Furniture and Furnishings (Fire) (Safety) Regulations 1988 With Amendments in 1989, 1993, and 2010 of United Kingdom	BS 5852	Pass
Fire Test on Building Materials and Structures	BS 476-12	Ignition did not occur
Color Fastness to Rubbing (2500 cycles)	BS EN ISO 105 X12:2002	4-5
Microbiological Test	ASTM G22-76 (Reapproved 1990) Procedure B	No bacterial growth observed
Surface Finish Gloss	LD3-2005 3.2	5.0
Light Resistance	LD3-2005 3.2	No Effect
Cleanability	LD3-2005 3.4	21
Stain Resistance Regeants 1-10	LD3-2005 3.4	No Effect
Stain Resistance Regeants 11-15	LD3-2005	No Effect
Boiling Water Resistance	LD3-2005 3.5	No Effect
Radiant Heat Resistance -sec	LD3-2005 3.10	66 sec
Dimensional Change Machine Direction - 10 Cross Direction - 15	LD3-2005 3.12	0.04 0.41
Surface Burning	ASTM E84	Flame 165 Smoke 200 Class C
Abrasion Resistance	ASTM D4157 Double Rue	No wear at 100,000 cycles
Colorfastness	ASTM D5053 Crocking	4.5 or slight to negligible

\* Technical data is accurate at the time of printing. Data is subjected to change without prior notice.



TEXTURES | Buffalo (BF) [ a medium-scale authentic texture ]

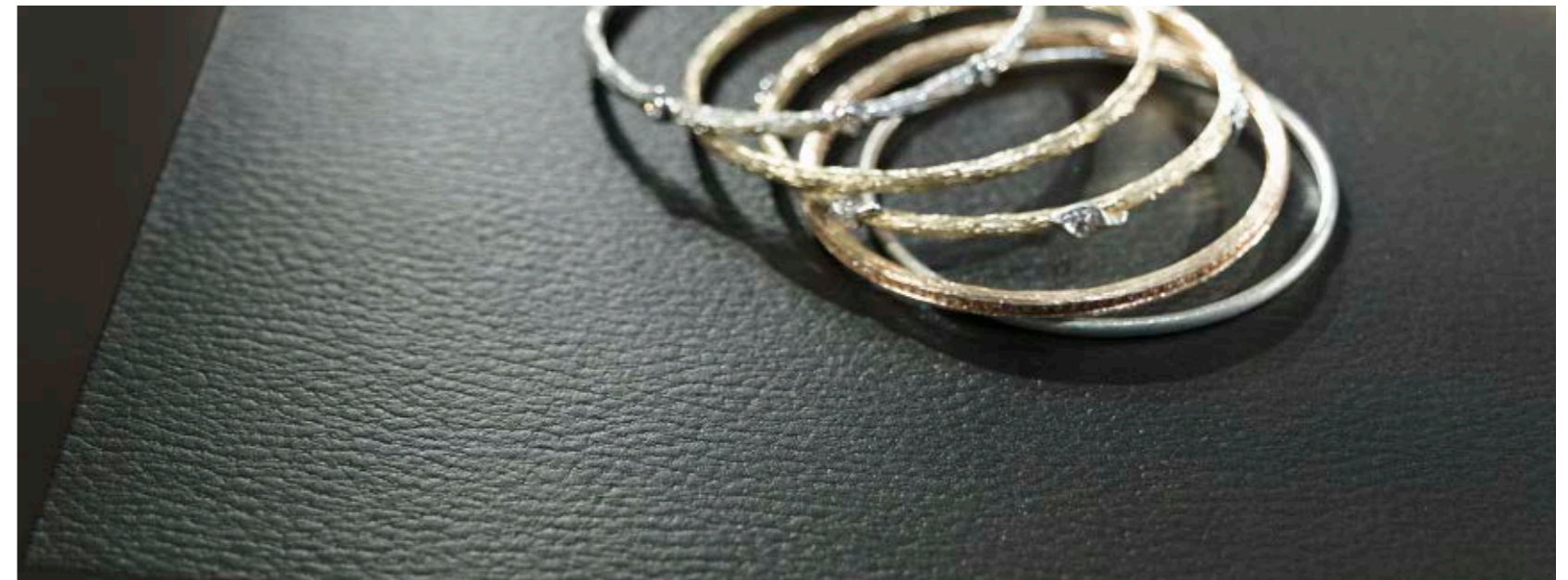


TEXTURES | Crocodile (CD) [ a medium-scale texture that is directional ]





TEXTURES | Shagreen (SG) [ a small 3-dimensional texture ]



TEXTURES | Walrus (WR) [ a small, all-over texture ]

**PRODUCT DESCRIPTION**

dECOLeather™ by Formica Group is a recycled leather veneer made from pulverized leather fibers extracted from car seats and leather tanneries. Despite not having a phenolic backing, the thickness of dECOLeather™ is comparable to veneer and laminate at 0.8mm.

**COLORS AND FINISH**

dECOLeather™ is available in 4ft. by 8 ft. sheets in 10 standard colors, 4 finishes, and 1 thickness (0.8mm). Actual size of sheet is slightly larger, approximately 49.5inch by 97.5inch. Custom colors are available with an 8 sheet minimum order and longer lead times. dECOLeather™ is a natural product, therefore slight color variance may occur from sheet to sheet.

**RECOMMENDED APPLICATION**

dECOLeather™ veneer can be used on light-duty horizontal or vertical applications, including but not limited to casework of restaurants, bars, retail kiosks, coffee shops, and hotel reception desk surfaces.

**USE AND CARE**

We commend the use of a damp well wrung terry cloth as the first and easiest option to maintain dECOLeather™ recycled leather veneer. Should you need to use additional cleaning products, we recommend using only pH-neutral cleaners, such as Bona Kemi Wood Floor Cleaner, designed for polyurethane pre-finished materials.

**PACKAGING**

dECOLeather™ can be packaged in a box or a pallet. Small quantities (5 or less) can be packaged in a double walled box rated at a minimum of 50lbs burst strength. Recommended box dimensions are 8"W x 8"H x 50"L. The sheets should be rolled with the face of the sheet on the inside. The maximum number of sheets per box is 5. Larger quantities of dECOLeather™ sheets (50+) should be packed on a pallet or crate. Use a maximum of 300 sheets of dECOLeather™ per pallet or crate to avoid damage to the texture.

**HANDING**

dECOLeather™ recycled leather veneer sheets must be handled with care. Two people are needed when handling the sheets. Sheets must be handled by sliding when possible. When lifting the sheets, each person should hold opposite corners, tensing the sheets straight, creating a "U" shape.



**FABRICATION AND ASSEMBLE**

dECOLeather™ sheets rely on adhesive for installation. If dECOLeather™ sheets are rolled in a shipping carton they should be removed and laid flat. dECOLeather™ and the substrates should be acclimated in the same environment for 72 hours in a room between 13°C - 32°C prior to installation with stable humidity levels. Both the dECOLeather™ and substrate must be smooth, clean, dry and free of grease, dirt, dust, oil or any other foreign matter. The best way to apply dECOLeather™ to a substrate is to use solvent based contact adhesive.

Use 100% coverage on both the back of the dECOLeather™ and face of substrate. Allow adequate time for contact adhesive to "tac-up". Tac-up takes about 10 minutes for solvent based contacts. (Please follow the instruction sheet of the adhesive supplier) Trapped gases can lead to bubbling or delamination of surface if not allowed to tac-up completely. Full pressing or nip rolling full panels is best. dECOLeather™ can be wrapped to tight approximate 1/5 inch radius. A one inch under wrap is necessary to prevent abuse of edge exposure. In most cases it is best to encapsulate the edges with metal, wood, plastic framing, or edge banding and corner protection.

**PANEL BALANCING**

As with any wood based substrate surfacing product there will need to be a balancing sheet on the back for certain applications where a panel is not bound (i.e. doors, signage, cabinets, etc.) The best balance is achieved using the same product on both sides using the same adhesive and bonded at same time.

**LIMITATIONS**

dECOLeather™ recycled leather veneer is designed for light duty horizontal and vertical applications for interior use only. Do not adhere directly to plaster or concrete. Do not use in areas exposed to temperatures exceeding 135°C, or areas of high humidity. dECOLeather™ can puncture or tear so avoid sharp object impact or scuff. Exposed edges can "fluff" when abraded, thus edges need to be encapsulated in metal, wood, plastic framing, or edge banding.

**MACHINING**

dECOLeather™ can be cut with a straight edge and razor knife. Routing edges can result in burrs and fuzzing so panels should be cut oversized and trimmed at the saw using triple chip blade configurations. CNC preferred settings are a speed of 200 in/min using a 4 flute 450 downward cutter. Recommended saw blades are an ATB alternate bevel cross cut with a scoring blade.

**SUBSTRATE**

dECOLeather™ veneer should be bonded to MDF, particleboard or good hardwood plywood substrates. All materials should be acclimated for 72 hours in the same environment. Substrates should be sanded smooth and cleaned of all debris.



# about FORMICA

## SINCE 1913

Formica®: Designs for today with forever in mind

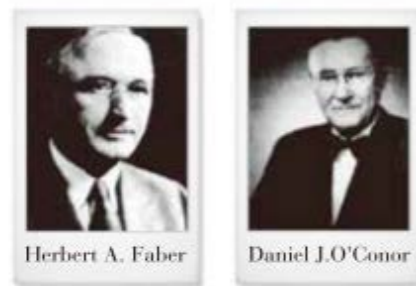
### Formica's LOGO History



Formica® was founded in Cincinnati in 1913 by two young men, Herber A. Faber and Daniel O'Connor. It was intended to serve as an electrical insulator and was created as replacement for Mica, which was used for that purpose at the time. Hence the name "Formica" was chosen. World-renowned artists and architects had also begun to recognize the potential of the decorative laminates and specified them for modernist and art deco interiors.

Formica® offers a complete series of surface decorative products, including High Pressure Laminate, Compact® Grade, ColorCore®, DecoMetal®, Formica® Veneer, Formica® Custom Graphics™, and Formica® CHguard® Series, etc. All High Pressure Laminate of Formica® conform to European BS EN438: 2008 standards. And meanwhile, we have got the certification of ISO 9001: 2008, 14001, OHSAS 18001, and GREENGUARD.

Formica® owns manufacturing bases worldwide, with four being located in Asia. Major based are located in Shanghai China, Jiujiang China, HsinChu Taiwan and Bangkok Thailand.



Formica® Group Founders

"As a professional word, "Formica" has been recorded in The Oxford English Dictionary, and as a replacement for decorative laminates."



O.E.D

Formica and the Formica Anvil Device are registered trademark of The Diller Corporation. © 2019 The Diller Corporation

# Sustainability

## Formica® Sustainability Statement

With sustainability a concern for the global community, Formica Group makes it a priority to offer architects, designers and consumers a full range of environmentally friendly surfacing products. Formica Group continually strives to create innovative products that promote a healthier environment. Find out more about how we're putting 'green' principles into practice.

### GREENGUARD Certification

Formica Group has taken significant steps to ensure that its products promote a healthy indoor air quality in homes, offices, schools and other indoor environments. According to the US Environmental Protection Agency (USEPA), the most effective way to reduce indoor air pollution is to reduce or eliminate harmful chemical emissions. Formica takes pride in meeting the strict emissions limits of the GREENGUARD Environmental Institute and in achieving GREENGUARD Certification for Indoor Air Quality for Formica® Laminates. Formica® Laminates, ColorCore®, Compact® and DecoMetal® are certified in Asia according to the GREENGUARD Certification and GREENGUARD Gold Certification standards for Indoor Air Quality.



### Carbon Reduction Label

Formica Group becomes the first laminate manufacturer in the world to be awarded with Carbon Trust's Carbon Reduction Label. Formica Group is demonstrating its ongoing commitment to reducing its global environmental impact by undergoing carbon footprint assessment and labelling products with the Carbon Reduction Label. Formica Group is pleased to announce that it has measured the carbon footprint for its range of High Pressure Laminates (HPL), Continuous Pressure Laminates (CPL), Compact Laminates and Bonded Worktops, which is Now qualified to carry the Carbon Trust's Carbon Reduction Label.

### Singapore Green Label

Formica® Laminates and Formica® Compact® Grade Laminate are Singapore Green Label certified by the Singapore Environment Council under "Environmentally Improved Low Emission Low Toxicity" category.



## LIMITED WARRANTY |

dECOLeather™ Recycled Leather Veneer

Formica (Asia) Limited expressly warrants that for a period of (1) one year from the date of first sale, Formica® Brand dECOLeather™ products will be reasonably free of defects in materials and workmanship, and that when properly handled and fabricated will conform to application manufacturing specifications. Colors are subject to sheet to sheet variation. This limited warranty only applies to Formica® Brand dECOLeather™ which is stored, handled, fabricated and installed in the manner recommended by Formica (Asia) Limited. The warranty does not cover damage caused by improper installation, improper lamination, excessive humidity or use of a non-recommended adhesive. Mistreatment of any kind, including mechanical impact, scuffing caused by hard objects, water damage, plumbing leaks, fire damage, inadequate maintenance, or improper usage will void this Limited Warranty. Mistreatment or improper usage includes damage from moving heavy objects across the surface without adequate protection, rotating vacuum cleaners or brushed, and dropping heavy or sharp objects onto the recycled leather. Further excluded are problems due to extreme temperatures, heat or cold, sunlight, stains, rips, tears, gouges or indentations.

### DISCLAIMER OR WARRANTIES

THE WARRANTIES SET FORTH HEREIN OR IN FORMICA (ASIA) LIMITED'S WARRANTY DOCUMENTS WITH RESPECT TO A PRODUCT ARE THE ONLY WARRANTIES MADE BY FORMICA (ASIA) LIMITED IN CONNECTION WITH THESE PRODUCTS, AND ARE EXPRESSLY IN LIEU OR ANY OTHER WARRANTIES, EXPRESS OR IMPLIED, INCLUDING WITHOUT LIMITATION, ANY WARRANTY OF MERCHANTABILITY OR FITNESS FOR A PARTICULAR PURPOSE. PRODUCTS SOLD BY FORMICA (ASIA) LIMITED ARE SOLD ONLY TO THE SPECIFICATION SPECIFICALLY SET FORTH BY FORMICA (ASIA) LIMITED IN WRITING. FORMICA (ASIA) LIMITED'S SOLE OBLIGATION FOR A REMEDY TO BUYER SHALL BE REPAIR OR REPLACEMENT TO NON-CONFORMING PRODUCTS, OR AT THE OPTION OF FORMICA (ASIA) LIMITED, RETURN OF THE PRODUCT AND REFUND OF THE PURCHASE PRICE. BUYER ASSUMES ALL RISK WHATSOEVER AS TO THE RESULT OF THE USE OF THE PRODUCTS PURCHASED, WHETHER USED SINGLE OR IN COMBINATION WITH OTHER SUBSTANCES.

### LIMITATION OF LIABILITY

No claim by buyer or any kind, including, claims for indemnification, whether as to quality or amount of products delivered or for no delivery of products, shall be greater in amount than the purchase price of the products in respect of which damages are claimed.

IN NO EVENT SHALL FORMICA (ASIA) LIMITED BE LIABLE TO BUYER FOR ANY SPECIAL, INDIRECT, INCIDENTAL, RELIANCE, EXEMPLARY, OR CONSEQUENTIAL DAMAGES OR COVER, OR LOSS OF PROFIT, REVENUE OR USE, IN CONNECTION WITH ARISING OUT OF, OR AS A RESULT OF THE SALE, DELIVERY, SERVICING, USE OR LOSS OF USE OF THE PRODUCTS OLD HEREUNDER, OR FOR ANY LIABILITY OF BUYER TO ANY THIRD PARTY WITH RESPECT THERETO. BUYER SHALL INSPECT FOR NONCONFORMITY PROMPTLY UPON RECEIPT.

Failure by buyer to give FORMICA (ASIA) LIMITED written notice of claim within 30 days from date of delivery, or in the cases of nondelivered form the date fixed for delivery shall constitute a waiver by buyer of all claims in respect of such products.

### FORMICA (ASIA) LIMITED

Room 1305-9, 13th Floor, Olympia Plaza, 255 King's Road, North Point, Hong Kong

Tel: (852) 2598-0117

*Formica® Formica® Surfaces, For Real® and the Formica® Anvil Logo are registered trademarks of The Diller Corporation. dECOLeather™, is trademark of The Diller Corporation. All rights reserved.*

## asia OFFICES

### Taiwan

Formica Taiwan Corporation

Taiwan – Taipei

6F., No. 68-70, Section 3, Nanking East Road,  
Zhongshan District, Taipei City 104, Taiwan

Tel : (886-2) 2515-1017

Fax : (886-2) 2517-0542

Taiwan – Taichung

8F.-8, No. 290, Section 2, Nantun Road,  
Nantun District, Taichung City 408, Taiwan

Tel : (886-4) 2472-6276

Fax : (886-4) 2475-1360

Taiwan – Kaohsiung

15F.-2, No. 110, Sanduo 4th Road,  
Lingya District, Kaohsiung City 802, Taiwan

Tel : (886-7) 330-2365

Fax : (886-7) 330-2175

### China

Formica (China) Trading Co., Ltd

China – Shanghai

903, BM InterContinental Business Center,  
100 Yutong Road, Shanghai 200070, China

Tel : (86-21) 6010-2688

Fax : (86-21) 6010-2658

China – Beijing

Rm. 530, Grand Pacific Building A, No. 8 Guanghua Road,  
Chaoyang District, Beijing 100026, China

Tel : (86-10) 6581-7717

Fax : (86-10) 6581-3708

China – Guangzhou

Rm. 1209, Jie Tai Plaza, No. 218-222 Zhongshan 6 Road,  
Yuexiu District, Guangzhou 510180, China

Tel : (86-20) 8132-0258/0259

Fax : (86-20) 8132-0033/0039

China – Dongguan

Rm.1412, Block 3, One Mall, No.200 Hongfu Road,  
Nancheng District, Dongguan 523073, China

Tel : (86-769) 2270-2216/2219

Fax : (86-769) 2278-1770

China – Shenzhen

Room 1501 – 1504, 15/F, Reith Center (Tower A, Century Holiday Plaza)  
No. 9030, North of Shennan Rd., Nanshan Area, Shenzhen 518053, China

Tel : (86-755) 8287-4868

Fax : (86-755) 8287-4880

### Hong Kong

Formica (Asia) Limited

Room 1305-9, 13/F., Olympia Plaza,  
255 King's Road, North Point, Hong Kong

Tel : (852) 2598-0117

Fax : (852) 2598-6577

### Thailand

Formica (Thailand) Co. Ltd.

51/27 Moo 2 Poochaosamingprai Road,  
Bangyaprak, Phrapradaeng,  
Samutprakarn, 10130 Thailand

Tel : (66-2) 701-9600

Fax: (66-2) 384-7537

Thailand Sales Office

216/63 L.P.N. Tower, 15th Floor  
Nanglinchee Road, Chongnonsee,  
Yannawa, Bangkok 10120 Thailand

Tel : (66-2) 285-4473

(66-2) 285-4474

Fax : (66-2) 285-2899

### Singapore

Formica (Singapore) Pte. Ltd.

No. 502/502A, Sims Avenue Singapore 387567

Tel : (65) 6514-1313

Fax : (65) 6846-7030

### Malaysia

Formica (Malaysia) Sdn. Bhd.

B-10-3A, Level 10, Menara Bata, PJ Trade Centre,  
No. 8, Jalan PJU 8/8A, Bandar Damansara Perdana  
47820 Petaling Jaya, Selangor D.E, Malaysia

Tel : (60-3) 7710-0512

Fax : (60-3) 7727-0510

### Indonesia

Sales Representative Office

Prince Centre Building, 15th Floor, Suite 1503

Jl. Jend Sudirman Kav. 3-4, Jakarta Pusat 10220, Indonesia

Tel : (62-21) 5700-477

Fax : (62-21) 5700-437

### Vietnam

Sales Representative Office

Level 3, 414 Nguyen Thi Minh Khai Street,  
District 3, Ho Chi Minh City, Vietnam

Tel : (84-28) 3832 6128

Fax : (84-28) 3832 6129

### Philippines

Sales Representative Office

Unit 1401, 14th Floor, MDI Corporate Center  
10th Avenue Corner 39th Street, Bonifacio Global City,  
Taguig City, Philippines

Tel : (632) 553-9996

Fax : (632) 856-0407

Em : phsales@formica.com

FORMICA FOR MORE, FORMICA FOR ME