



Formica® Crystallite™ Cubicle System



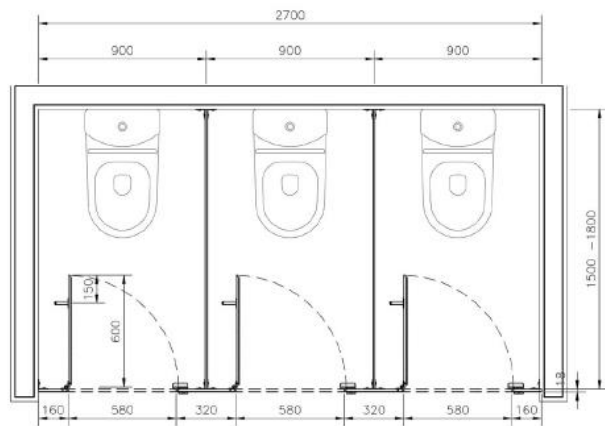
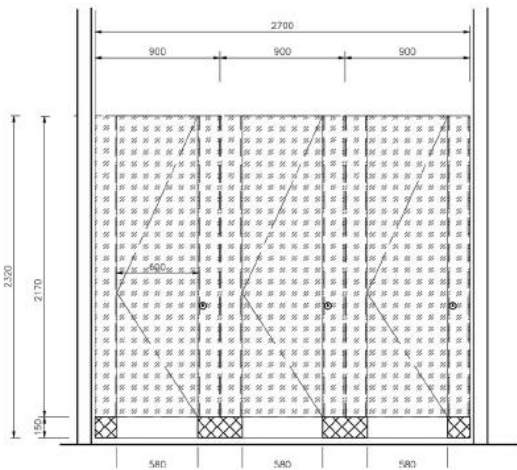
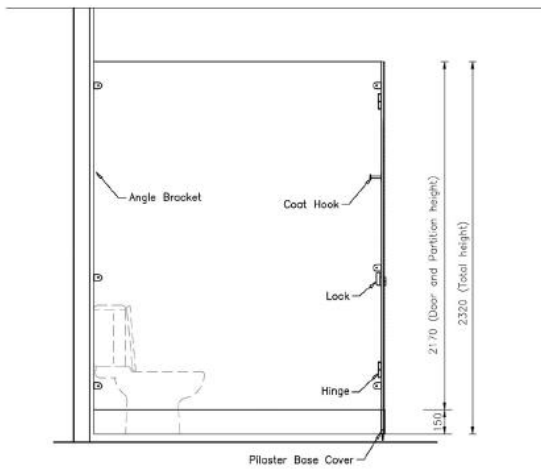
BS EN438

BS476  
Part 6 & 7



**Job Reference**

- New Bright Building
- EMSD Headquarters
- Hong Kong Museum of Art
- Mega Box
- The Elements
- Club House, The Legend
- The Praia Macau
- Sunshine City Plaza



## Floor Plan

## Specification

### Material:

Formica® Protec+™ Silver (Ag+) antimicrobial compact laminate, blackcore, decopaper on double sides in matte finish or naturelle (NT) finish 12mm thick for partition, 6mm featured tempered glass (provided by other) adhere to 12mm thick Compact™ Grade laminate for pilaster and door.

### International Standard & Certifications:

Greenguard Gold Certification; Greenguard Certification; BS EN-438-2016; ISO9001; ISO14001; Carbon Reduction Label; BS476 Part 6 and 7; Antifungal ASTM G21:2013 test report, with 0 (None); Antibacterial JIS Z2801:2012 prevent growth of bacterial up to 99.9% within 24 hours.

### Hardware:

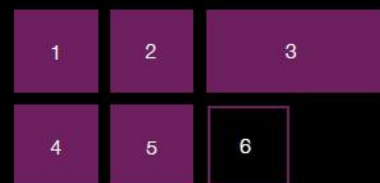
Stainless steel hardware includes self closing / opening gravity hinge, indicator lock set with emergency opening, handle, angle bracket and coat hook.

### Optional:

Single toilet roll holder.

### Recommended Dimension:

800-900mm(W) x 1500-1800mm(D) x 2320mm(H) / 1820mm(H)  
(Overall height from finish floor level to pilaster top)



### Standard Hardware

- 1) Self Closing / Opening Gravity Hinge
- 2) Angle Bracket
- 3) Indicator Lock Set With Emergency Opening
- 4) Coat Hook
- 5) Handle

### Optional Hardware

- 6) Single Toilet Roll Holder