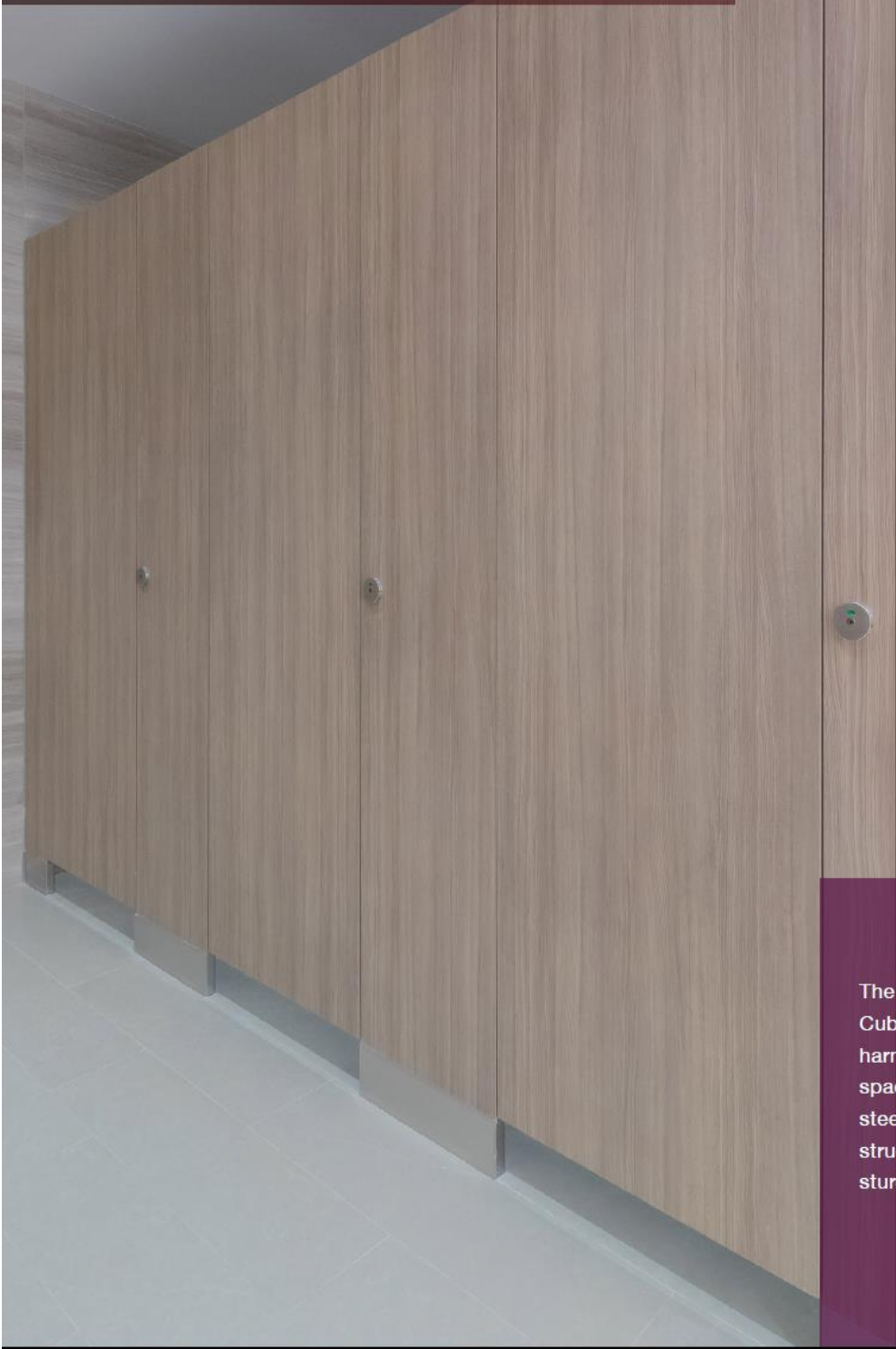


## Formica® Coolinear™ Cubicle System



The design of Formica® Coolinear™ Cubicle System is simplicity and harmony. You can feel the delicacy, space and flexibility. The stainless steel hardware and the floor anchor structure fixing keep the cubicle very sturdy even without the headrail.



BS EN438

BS476  
Part 6 & 7



Hutchison House



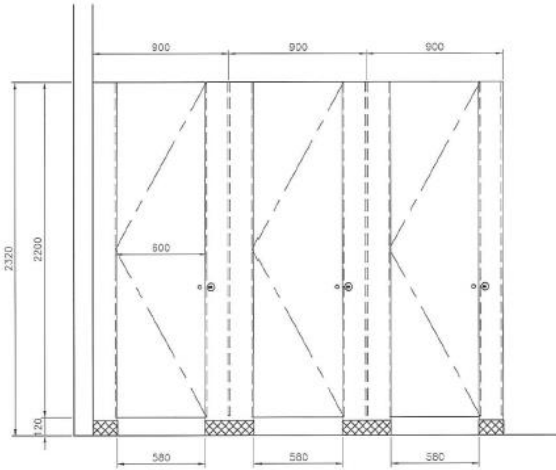
Jubille Garden  
Shopping Centre



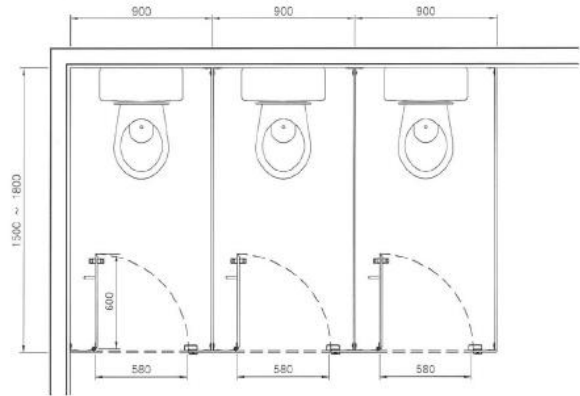
One Central Macau

**Job Reference**

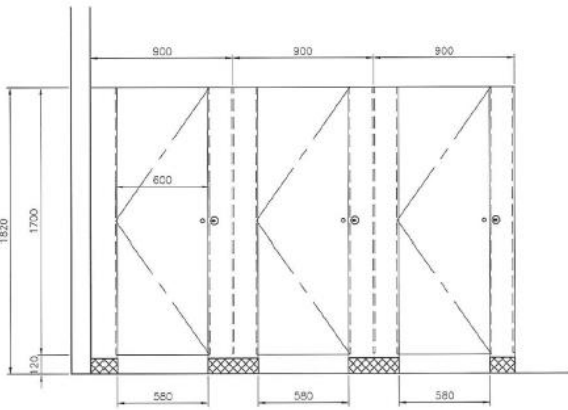
- Wheelock-One Bay East
- Wheelock-One HarbourGate
- MTR at South Horizons Station
- MTR Headquarters Building, Telford Plaza II
- China Unicom Data Centre, TKO
- Shaw Movie City, TKO
- CX City Cathay Pacific
- HSBC Centre Tower 1, 2 &3
- Construction Industry Council
- Hong Kong Football Club
- Kai Tak EMSD Headquarter
- Western District Alliance Church Christian & Missionary Alliance
- Yan Chai Hospital Wan Shing Memorial Social Centre for the Elderly
- Wai Ji Christian Service Day Activity Centre
- The Hong Kong Jockey Club Headquarter
- The Hong Kong Jockey Club Betting Hall
- Chinese YMCA of Hong Kong Wong Chuen King Student Development Centre
- Wanchai District Elderly Community Centre
- Hong Kong Young Women's Christian Association
- Chinachem Golden Plaza
- Long Ping Shopping Centre
- Matilda International Hospital
- Hong Kong Sanatorium Hospital
- Hong Kong Housing Society Office
- Royal Park Hotel
- Studio City
- City of Dreams, Macau



Front elevation A

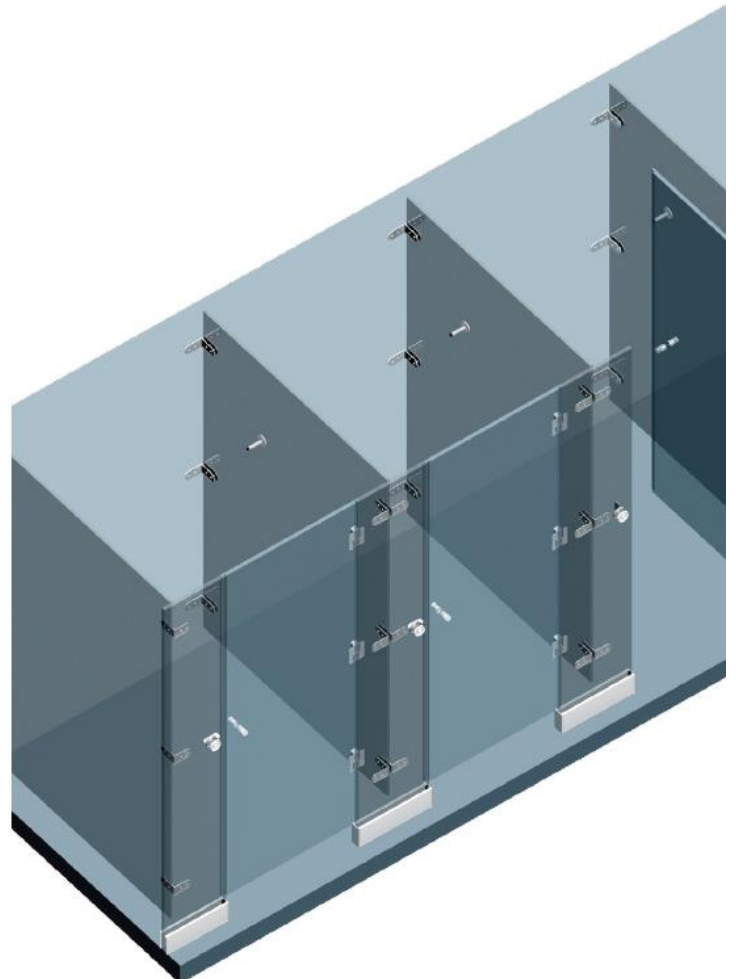


Floor Plan



Front elevation B

Front elevation (A) (B) Remark: These drawings are for reference only. Formica cubicle's height is highly flexible to suit your requirement. Please mention the height you require at the specification.



## Specification

### Material:

Formica® Protec+™ Silver (Ag+) antimicrobial compact laminate, blackcore, decopaper on double sides in matte finish or naturelle (NT) finish 12mm thick.

### International Standard & Certifications:

Greenguard Gold Certification; Greenguard Certification; BS EN-438-2016; ISO9001; ISO14001; Carbon Reduction Label; BS476 Part 6 and 7; Antifungal ASTM G21:2013 test report, with 0 (None); Antibacterial JIS Z2801:2012 prevent growth of bacterial up to 99.9% within 24 hours.

### Hardware:

Stainless steel hardware includes angle bracket, self closing / opening gravity hinge, indicator lock set with emergency opening handle, coat hook and pilaster base cover.

### Optional:

Stainless steel single toilet roll holder.

### Recommended Dimension:

800-900mm (W) x 1500-1800mm (D) x 2320mm (H) / 1820mm (H)  
( Overall height from finish floor level to pilaster top )



### Standard Hardware

- 1) Self Closing / Opening Gravity Hinge
- 2) Angle Bracket
- 3) Handle
- 4) Indicator Lock Set With Emergency Opening
- 5) Coat Hook
- 6) & 7) Pilaster Base Cover

### Optional Hardware

- 8) Single Toilet Roll Holder