



FORMICA FOR MORE, FORMICA FOR ME

## FORMICA® SURELL® ACRYLIC

### SEAMLESS NONPOROUS SURFACES by Formica Group

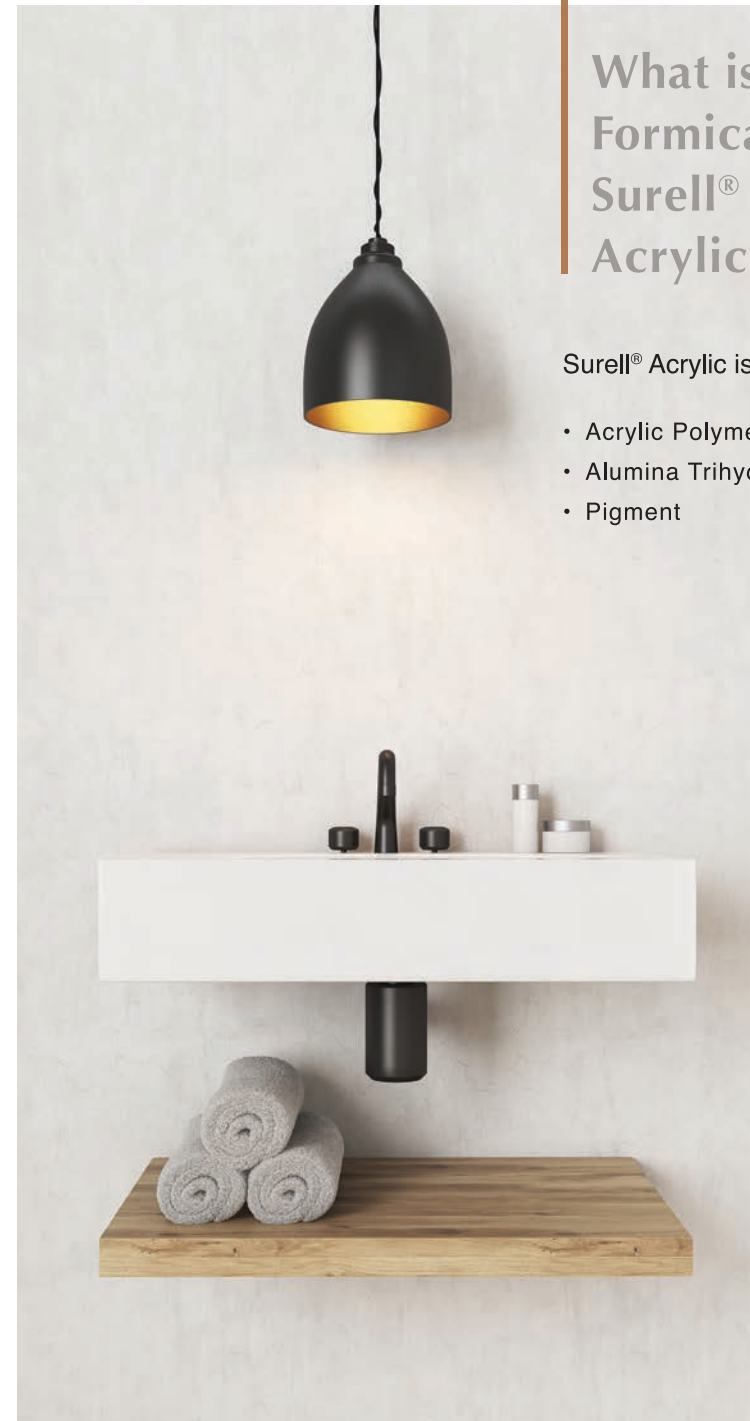
As tough as it is beautiful, Formica® Surell® Acrylic shapes itself to virtually any design concept, offering a palette of modern colors in every mood. Plus, color and design go all the way through to allow endless design and shape options, including edgings, accents and inlay. The durable, non-porous surface is ideal for a worktable or custom bar top, as well as sinks and shower surrounds.

# FORMICA®

## What is Formica® Surell® Acrylic

Surell® Acrylic is made with

- Acrylic Polymer (MMA)
- Alumina Trihydrate (ATH)
- Pigment



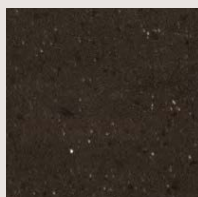


## Marble™ Collection

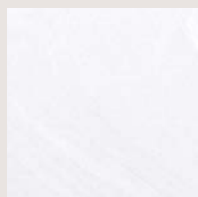
The Marble™ Collection has the appearance of stunning natural stones, with its dimensional large scale movement and pattern.



**SH01**  
Onyx Cloud



**SH05**  
Starry Gold



**SH07**  
Bianco



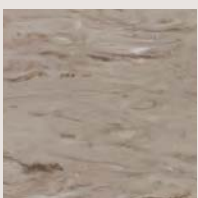
**SH08**  
Limestone



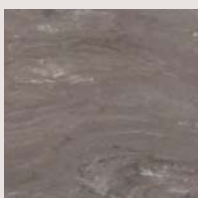
**SH09**  
White Agate



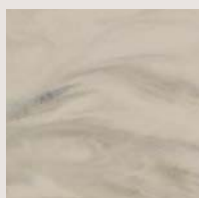
**SH14**  
Ivory Ash



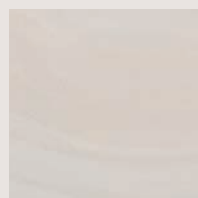
**SH16**  
Hazelnut



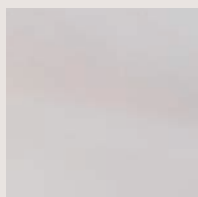
**SH17**  
Reefy



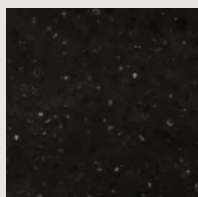
**SH20**  
Galaxy Rock



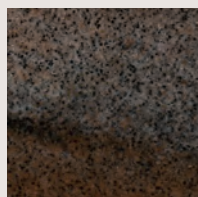
**SH21**  
Cloud Forest



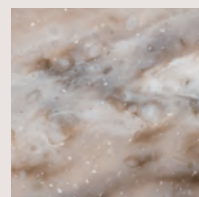
**SH24**  
Pearl Ore



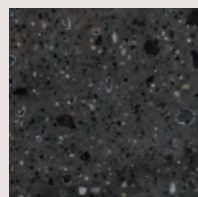
**SH25**  
Earthen



**SH26**  
Cosmos



**SH27**  
Mars



**SH29**  
Carbon Ash

When making a final decision on Formica® Surell® Acrylic, please view the color on an actual product.







## Contemporary Collection

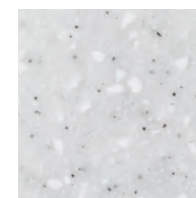
Our finest surfaces offer an array of upscale looks soft neutral to dazzling colors.



**SC02**  
Coral Sands



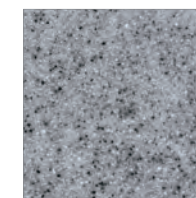
**SC04**  
Frozen



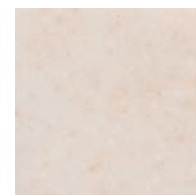
**SC09**  
Snow



**SC10**  
Yogurt



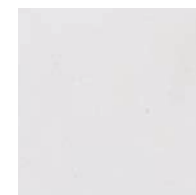
**SC11**  
Storm Grey



**SC18**  
Sandstone



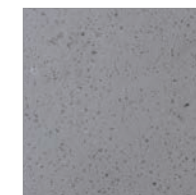
**SC19**  
Starlight



**SC23**  
Frost Pearl



**SC24**  
Silver Fox



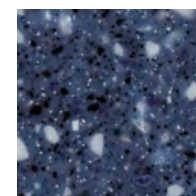
**SC26**  
Clay Ash



**SC27**  
Shell Sand



**SC29**  
Galaxy Ore



**SC52**  
Ocean

When making a final decision on Formica® Surell® Acrylic, please view the color on an actual product.



## Transparent Collection

Inspired by both man-made and natural materials, these luxuriously smooth surfaces offer an extraordinary clarity and depth of pattern and color.



**SP10**  
Concrete White



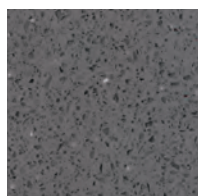
**SP11**  
Neo Silver



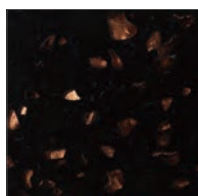
**SP16**  
Star Grey



**SP18**  
Polar White



**SP21**  
Neutral Grey



**SP42**  
Royal Stone



When making a final decision on Formica® Surell® Acrylic, please view the color on an actual product.



## Solid/Designer Collection

Versatile neutrals are economical and stylish for counters, walls or window sills.



**SD01**  
Festival



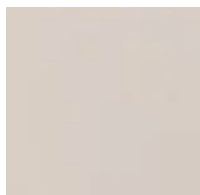
**SD03**  
Orange



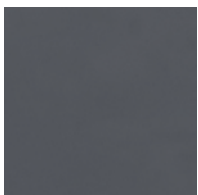
**SB04**  
Pure White



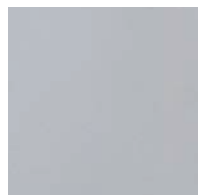
**SB05**  
Pure Black



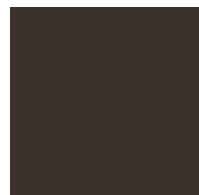
**SB06**  
Almond Sweet



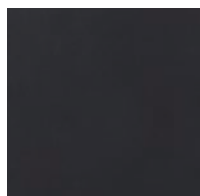
**SD09**  
Carbon Grey



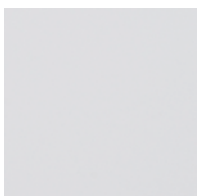
**SB10**  
Light Ash



**SD11**  
Espresso



**SB13**  
Iron Ore



**SB19**  
Glacier White



Over One Century Manufacturer

When making a final decision on Formica® Surell® Acrylic, please view the color on an actual product.

## Use & Care Guide

SURELL® Acrylic material will give you years of service and enjoyment with some simple care and precautions.



- **TO KEEP CLEAN AND REMOVE SIMPLE STAINS:**

Use a damp cloth and any household detergent to maintain a fresh and clean look.

- **TO REMOVE STUBBORN STAINS, HARD WATER DEPOSITS, CIGARETTE BURNS AND MINOR SCRATCHES ON MATTE-FINISH MATERIALS :**

Use an abrasive cleanser or an abrasive scrub sponge such as 3M Scotch-Brite brand green/yellow kitchen scrub sponge or the equivalent maroon industrial pad(3M Scotch-Brite brand #7447).

- **TO REMOVE DEEP STAINS AND SCRATCHES:**

Use fine sandpaper and then finish as mentioned above.

- **TO RESTORE POLISHED SURFACES:**

Special skills and equipment are required to restore polished finishes. Consult your fabricator or dealer for assistance.

Caution: All finishes other than matte require special finishing techniques.

- **TO RESTORE SEVERE DAMAGE:**

Special skills and equipment are required to repair damaged sections. Consult your fabricator or dealer for assistance.



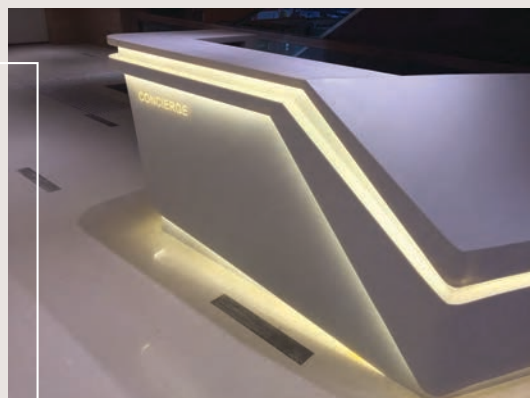


## Job Reference



Kitchen Top





Commercial



Hospitality



## R e s t a u r a n t





# Surell® Acrylic Description

## 1 BASIC USES

Formica® Surell® Acrylic is manufactured for interior applications where a decorative, durable, wear and stain resistant surface is required. Horizontal applications include vanity tops, countertops, residential and commercial furniture, window sills and thresholds. Vertical applications include wall panels, wainscoting, backsplashes, baseboards, and bath and shower enclosures.

## 2 PERFORMANCE

Formica® Surell® Acrylic has the unique quality where it can be thermoformed to various shapes that is necessary. The high flexibility goes beyond your imagination.

Formica® Surell® Acrylic is a high density with non-porous surface (low water absorption rate 0.04%) It is a hygienic surface and does not support the growth of the bacteria (ISO 22196) and fungi (ASTM G21-15). It does not require any specialist cleaning agent. Most of the stain and dirt can be easily wiped off with a damp cloth and ordinary soap. Stubborn stain should be handled by professional with 3M Scotch Brite pad#7447.

Formica® Surell® Acrylic can offer you a safe standard. It complies with international fire test and non-toxic test. It achieves class B of EN13501-1 and class 1 of ASTM E84-16. In addition, it passes the standard of smoke toxicity test DIN 5510-2.

In addition, Formica® Surell® Acrylic can fulfill a lot of international standard e.g. cleanability and stain resistance, ball impact resistance, boil water resistance, heat resistance. It is a durable, non-porous surface with inconspicuous seams which is ideal for a worktable, kitchen top, vanity top, custom bar top and whatever horizontal and vertical surface you need.

## 3 STANDARD SIZES AND THICKNESSES

Formica® Surell® Acrylic sheets are available in:

- Thicknesses of 12mm
- Width of 760mm
- Lengths of 3,680mm

Not all patterns are routinely stocked in all sizes and thickness. See your Formica® Surell® Acrylic distributor or representative for colors and sizes available from stock.

## 4 INSTALLATION

Formica® Surell® Acrylic® products are intended for installation by professional fabricator. Your Formica® Surell® Acrylic distributor or representative can provide names of fabricators in your area. The Formica® Surell® Acrylic Fabrication Guide provides detailed instructions for the fabrication of sheets and bowls. Design and fabrication of Artifacts differs from traditional solid surfacing. In order to enhance the look of your designs, consult the Artifacts Technical Brief prior to specification or fabrication.

**Adhesives:** Color-coordinated Formica® Surell® Acrylic is recommended for making countertop seams and for joining bowls to tops. When applied according to directions, Formica® Surell® Acrylic Seam Adhesive provides an inconspicuous seam. Note: When contrasting top and bowl are joined, it is recommended that the seam adhesive color should be matched to the bowl colors.

Formica® Surell® Acrylic may be installed over vertical substrates including gypsum board, ceramic tile, plywood, and plaster. See Formica® Surell® Acrylic Fabrication Guide for recommended bonding technique.

## 5 MAINTENANCE

Formica® Surell® Acrylic sheets and sinks/bowls may be cleaned with a damp cloth and ordinary soap, household liquid detergent, household chlorine bleach, or a powdered cleanser. Strong acid or alkaline drain cleaners and oven cleaners will damage the surface.

Stubborn stains or unusual damage can be repaired with 3M Scotch Brite pad#7447 or 320-360 grit sandpaper. Severe damage can often be repaired by sanding with 120 grit sandpaper and then following with 220 grit papers. For matte finish, follow sanding with a 3M Scotch Brite pad#7447 (or equivalent) to match gloss level of sanded area to the surrounding area. Plastic or counter cleaner polishes will enhance the appearance.

## 6 PRECAUTIONS

**Heat:** Do not place high temperature objects (e.g. Teapot) or heat-generating appliances directly on the Formica® Surell® Acrylic product. Hot cookware and heat generating appliances can damage the countertop surface. The use of a trivet or other insulating pad is recommended.

**Cutting:** Avoid cutting on your Formica® Surell® Acrylic top. Under excessive or abusive usage conditions, Formica® Solid Surfacing - Surell® Acrylic material will show cut marks. The use of a cutting board is recommended.

**Stains:** While Formica® Surell® Acrylic is resistant to most common household chemicals, some strong acid or alkaline cleaners and cleansers can mar or permanently discolor Formica® Surell® Acrylic if allowed to remain on the surface for an extended period. Accidental spills or splatters from harsh materials should be wiped off immediately and then rinsed with water. Potentially harmful compositions include: toilet bowl cleaners, drain cleaners, rust removers, contact adhesive solvent, ceramic cooktop cleaners, oven cleaners, paint or varnish removers, lacquer thinners, metal cleaners.

## 7 LIMITATIONS

Formica® Surell® Acrylic sheets should not be used in exterior applications. Do not use in areas exposed to sustained temperatures in excess of 175°F (79°C). Unsupported horizontal overhangs should be limited to 6" for 1/2" material and 12" for 3/4" material. Quarter-inch material is recommended for vertical applications only. Formica® Surell® Acrylic should not be used for structural applications or flooring. Care should always be taken to avoid trapping moisture behind Formica® Surell® Acrylic. Dark colored solid surface is recommended only for light duty applications such as residential vanities, custom furniture, signage, backsplashes, and accent strips. Wear and scratches will be more apparent on dark surfaces in heavy use applications, such as countertops and work surfaces. Dark colors will require more maintenance to retain a like-new appearance, especially on kitchen countertops, restaurant table tops/bars or other applications where heavy use may occur. Dry ice should not come in contact with Formica® Surell® Acrylic.

## 8 FINISH

The standard surface of Formica® Surell® Acrylic sheets and bowls is a matte and/or satin finish similar to that obtained by light sanding with 320-360 grit sandpaper (gloss level 5-18). A higher gloss can be attained during fabrication by sanding buffing with commercially available polishing compounds. If you have specified a polished appearance, the surface will naturally require repolishing to restore the gloss following repair.

## 9 TECHNICAL SERVICE AND ASSISTANCE

Technical assistance may be obtained through the local Formica® Surell® Acrylic distributor or from Formica (Asia) Ltd trained representatives in sales offices throughout Hong Kong. Supporting information provided through our network of distributors includes a range of technical literature and a comprehensive fabrication guide. To assist these representatives, the company maintains a sales technical services staff in Hong Kong. For technical assistance, contact your distributor, sales representative, and email to the company directly [info.hk@formica.com](mailto:info.hk@formica.com), or call (852) 2598 1000, fax (852) 2598 5603.

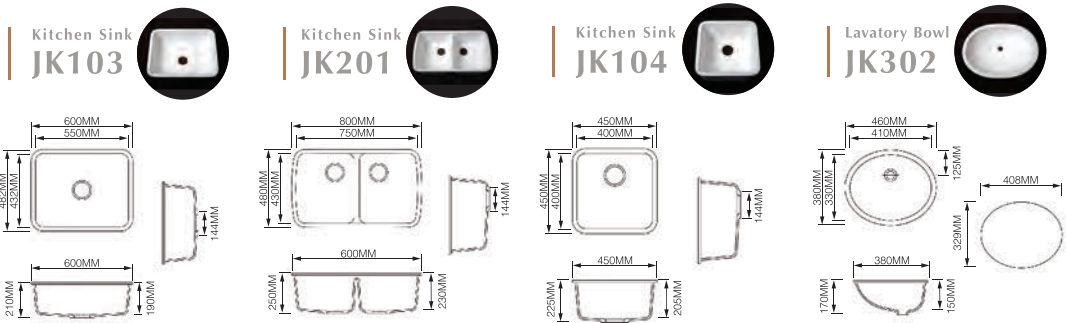
## 10 TRADEMARK AND COPYRIGHT INFORMATION

Formica® Surell® Acrylic material is processed by The Diller Corporation. Formica and Formica logo are registered trademarks of The Diller Corporation. 1-800FORMICA is a trademark of The Diller Corporation. Scotch-Brite® is a registered trademark of 3M Company. Manufacturer of this product is covered by one or both U.S. Patent Numbers 4,473,673 and 4,652,596 and by corresponding patents in other countries.

## 11 10-YEAR LIMITED MATERIAL WARRANTY

Formica (Asia) Ltd. warrants to the original end-use purchaser that it will, at its option, repair or replace without charge or refund the cost of Formica® Surell® Acrylic if the product fails solely due to a manufacturing defect within 10 years of the date of initial installation. Please consult our staff for detailed terms and conditions

Physical Properties	Test Method	Unit	Result
Knife Drop	ANSI Z124.6-2007 Clause 4.2.2		Pass
Skillet Drop	ANSI Z124.6-2007 Clause 4.2.3		Pass
Stain Resistance	ANSI Z124.6-2007 Clause 5.2		1) Rating : 49 2) 0.04mm
Wear and Cleanability	ANSI Z124.6-2007 Clause 5.3		Pass
Thermal Shock Resistnace	ANSI Z124.6-2007 Clause 6.1		Pass
IZOD Notched Impact Strength	ASTM D256-10E1 Method A		22J/m C(complete break)
Barcol Hardness	ASTM D2583-13a		64
Specular Gloss	ASTM D523-14		4.6
Water Absorption	ASTM D570-98 (2010)E1	%	0.04%
Tensile Modulus	ASTM D638-14	Mpa	10200MPa
Tensile Test	ASTM D638-14		Tensile Strength = 44.7MPa Elongation at Break = 0.50%
Deflection Temperature under Load	ASTM D648-16 Method B	°C	99.3°C
Coefficient of Linear Thermal Expansion	ASTM D696-08	/ °C	1.85 x 10 <sup>-5</sup>
Rockwell Hardness	ASTM D785-08(2015) Procedure A		89.5M
Flexural Strength and Flexural Modulus	ASTM D790-15E2 Procedure A		Flexural strength = 65.5MPa Felxural modulus = 10300MPa
Specific Gravity	ASTM D792-13 Method B		1.74
Mean Coefficient of Linear Thermal Expansion	ASTM E831-14		46.6µm/(m·°C)
Surface Burning Characteristics	ASTM E84-16		Class A
Resistance to Fungi	ASTM G21-15 Aspergillus brasiliensis Penicillium funiculosum Aureobasidium pullulans Chaetomium globosum Trichoderma virens		0 Grade (None)
Resistance of Plastic to Bacteria	ASTM G22-76 (Reapproved 1990) Procedure B Pseudomonas aeruginosa		No sign of bacterial growth on the tested samples. Sample does not promote bacterial growth.
Impact Test	BS 3962-6:1980 Clause 5.2	Rating	5 (Tne Best)
Cross-Cut Test	BS 3962-6:1980 Clause 5.3	Rating	5
FED Fractional Effective Dose	DIN 5510-2:2009		Pass
Mohs' Hardness	EN 101:1991	Rating	2
Fire Classification	EN 13501-1:2007+A1:2009		B-s1, d0
Composition Analysis	FTIR, PGC-MS, XRF and TGA	Wt%	Polyacrylate (PAR) 34% Aluminum Hydroxide 66%
Resistance to Cigarette Burns	ISO 19712-2:2007 Clause 11 Method A	Rating	4
Antimicrobial Activity	ISO 22196:2011 Staphylococcus aureus Candida Albicans ATCC 10231 Escherichia col	mL	<0.0 <0.0 0.17
Stain Resistance	ISO19712-2 Clause 10.1 Method A	Rating	4-5
Stain Resistance	ISO19712-2 Clause 10.2 Method B	Rating	3
Cleanability/Stain Resistance	NEMA LD3-2005, Section 3.4		Cleanability Rating : 10 Stain Resistance: No Effect
Light Ageing Test-Xenon-arc Exposure	NEMA LD3-2005, Section 3.3		No effect (No change in color or surface finish)
Boiling Water Resistance	NEMA LD3-2005, Section 3.5		No effect (No change in color or surface finish)
High Temperature Resistance	NEMA LD3-2005, Section 3.6		No effect (No change in color or surface finish)
Ball Impact Resistance	NEMA LD3-2005, Section 3.8	mm	>2000mm



Formica® Surell® Acrylic Sinks and bowl can be mounted to Formica® Surell® Acrylic sheets to create a smooth integrated design or one with an overhang.

# Formica® Asia Offices

## 台灣富美家股份有限公司\_台北

台北市104中山區南京東路三段68-70號6樓

電話：(886-2) 2515-1017

傳真：(886-2) 2517-0542

免付費專線：0800-088-199

## 台灣富美家股份有限公司\_台中

台中市408南屯區南屯路二段290號8樓之8

電話：(886-4) 2472-6276

傳真：(886-4) 2475-1360

## 台灣富美家股份有限公司\_高雄

高雄市802苓雅區三多四路110號15樓之2

電話：(886-7) 330-2365

傳真：(886-7) 330-2175

## 富美家(中國)貿易有限公司\_上海

上海市閘北區裕通路100號

寶礦洲際商務中心903室

郵編：200070

電話：(86-21) 6010-2688

傳真：(86-21) 6010-2658

## 富美家(中國)貿易有限公司\_北京

北京市朝陽區光華路8號

和喬大廈A座530室

郵編：100026

電話：(86-10) 6581-7717

傳真：(86-10) 6581-3708

## 富美家(中國)貿易有限公司\_廣州

廣州市越秀區中山六路218-222號

捷泰廣場1209室

郵編：510180

電話：(86-20) 8132-0258

傳真：(86-20) 8132-0033

## 富美家(中國)貿易有限公司\_東莞

東莞市南城區鴻福路200號

第一國際百安中心A座1109室

郵編：523073

電話：(86-769) 2270-2216

傳真：(86-769) 2278-1770

## 富美家(中國)貿易有限公司\_深圳

深圳市南山區深南大道9030號

瑞思中心15樓1501-1504室

郵編：518053

電話：(86-755) 8287-4878

傳真：(86-755) 8287-4880

## 富美家(中國)貿易有限公司\_成都

成都市錦江區福興街1號

華敏翰尊國際大廈1412室

郵編：610016

電話：(86-28) 8670-3160

傳真：(86-28) 8670-3180

## HONG KONG

### Formica (Asia) Limited

Room 1305-9, 13/F., Olympia Plaza,

255 King's Road, North Point, Hong Kong

Tel : (852) 2598-0117

Fax : (852) 2598-6577

## THAILAND

### Formica (Thailand) Co. Ltd.

51/27 Moo 2 Poochaosamingprai Road,

Bangyaprak, Phrapradaeng,

Samutprakarn, 10130 Thailand

Tel : (66-2) 701-9600

Fax : (66-2) 384-7537

## Thailand Sales Office

216/63-64 L.P.N. Tower, 15th Floor

Nanglinchee Road, Chongnonsee,

Yannawa, Bangkok 10120 Thailand

Tel : (66-2) 285-4473

(66-2) 285-4474

Fax : (66-2) 285-2899

## SINGAPORE

### Formica (Singapore) Pte. Ltd.

No. 502/502A, Sims Avenue Singapore 387567

Tel : (65) 6514-1313

Fax : (65) 6846-7030

## MALAYSIA

### Formica (Malaysia) Sdn. Bhd.

B-10-3A, Level 10, Menara Bata, PJ Trade Centre,

No. 8, Jalan PJU 8/8A, Bandar Damansara Perdana

47820 Petaling Jaya, Selangor D.E, Malaysia

Tel : (60-3) 7710-0512

Fax : (60-3) 7727-0510

## INDONESIA

### Representative Office

Prince Centre Building, 15th Floor, Suite 1503

Jl. Jend Sudirman Kav. 3-4,

Jakarta Pusat 10220, Indonesia

Tel : (62-21) 5700-477

Fax : (62-21) 5700-437

## PHILIPPINES

### Representative Office

Unit 1401 14th. Floor, MDI Corporate Center

10th Avenue Corner 39th Street, Bonifacio Global City,

Taguig City, Philippines

Tel : (632) 553-9996

Fax : (632) 856-0407

## VIETNAM

### Representative Office

Level 3, 414 Nguyen Thi Minh Khai Street,

District 3, Ho Chi Minh City, Vietnam

Tel : (84-28) 3832-6128

Fax : (84-28) 3832-6129